

---

# Parochos API Documentation

Version 3.0.27

## Versions

Version	Date	Changes
3.0.14	10/01/2025	Update <a href="#">Appendix 5</a> with new supported NSP EveryPay (code 15).
3.0.15	16/01/2025	Update <a href="#">Download publish logs</a> with new soft-reject status value. Add B2G fields:BT-71, BT-17, BT-19 and update field BT-16 Tax Authorities' & UBL2.1 configured in External System and Tax Authorities' & UBL2.1 configured in Parochos. Update <a href="#">Appendix 5</a> with new supported NSP NEXI WebECR (code 304).
3.0.16	06/02/2025	Add the automatic transmission with transmissionType = 5 in Invoice Transmission .
3.0.17	20/05/2025	Removed “OtherMeasurementUnitQuantity” and “OtherMeasurementUnitTitle”, as they will be obsolete according by Greek <a href="#">Tax Authorities</a> .
3.0.18	22/05/2025	New endpoint <a href="#">ListDetails</a>
3.0.19	30/06/2025	Updated <a href="#">ListDetails</a> with date range paged filtering.
3.0.20	02/07/2025	Updated <a href="#">Appendix 3</a> with 00150004 and 00010077 error codes.
3.0.21	03/07/2025	Updated <a href="#">Appendix 3</a> with 00160000 error code.
3.0.22	09/07/2025	Add new section <a href="#">Order Forms</a> with method <a href="#">Connect Documents</a> . Add method <a href="#">Cancel</a> in section <a href="#">AADE Provider API Calls</a> .
3.0.23	16/09/2025	Add new fields exchangeRate, discountOption, discountAmount, correlatedInvoices/invoiceType, IsCancelling in <a href="#">Tax Authorities' &amp; UBL2.1 configured in External System</a> and Tax Authorities' & UBL2.1 configured in Parochos.
3.0.24	21/10/2025	Removed section 5.4 Invoice Delayed Transmission, to align with the latest Tax Authorities requirements. Add new field supplyAccountNo in Tax Authorities' & UBL2.1 configured in External System and Tax Authorities' & UBL2.1 configured in Parochos.
3.0.25	27/11/2025	RequestPayment support for new externalPaymentId. Add new fields reverseDeliveryNote, reverseDeliveryNotePurpose, ublAllowancesInTotals and externalPaymentId in Tax Authorities' & UBL2.1 configured in External System and Tax Authorities' & UBL2.1 configured in Parochos
3.0.26	19/02/2026	Add new fields, group otherCorrelatedEntities and group packingsDeclarations in Tax Authorities' & UBL2.1 configured in External System and Tax Authorities' & UBL2.1 configured in Parochos. Update <b>Error! Reference source not found.</b> with new supported NSP Planet (code 16).
3.0.27	22/04/2026	Fix otherCorrelatedEntities structure and update packingsDeclarations to list in Tax Authorities' & UBL2.1 configured in External System and Tax Authorities' & UBL2.1 configured in Parochos.

---

# Contents

## Contents

Solution.....	5
Flow Chart .....	6
Authentication .....	6
Login.....	7
Refresh Token.....	8
API User .....	9
AADE Provider API Calls.....	10
Request Payment .....	11
Invoice Transmission .....	13
Polling process status .....	16
Granting Write Access to Azure Storage.....	17
Upload file to Azure.....	19
Verification of Upload to Azure Storage .....	20
File Retrieval and Download Process.....	21
Downloads publish logs (B2G only) .....	22
Submit Payment .....	23
Cancel Payment .....	26
Get Payments.....	28
Cancel .....	29
Methodology/Flow for payments.....	29
Point of Service Management.....	31
Set State .....	31
Assign Document .....	32
List .....	33
ListDetails.....	34
Order Forms .....	36
Connect Documents.....	36
RepublishB2G.....	37
Invoice Source Data analysis .....	39
Tax Authorities & UBL2.1 configured in External System .....	40
Tax Authorities & UBL2.1 configured in Parochos.....	47

---

Invoice Delayed Transmission .....	49
Invoice_structure.json .....	50
Appendix 1 .....	55
Appendix 2.....	55
Appendix 3.....	56
Parochos Operational Error Codes .....	56
Appendix 4.....	58
B2G Validation Error Messages .....	58
Appendix 5.....	61
EFT-POS Service Providers .....	61
Hospitality .....	62
Cancel Connected.....	62
API Reference & Real-Time Documentation.....	63

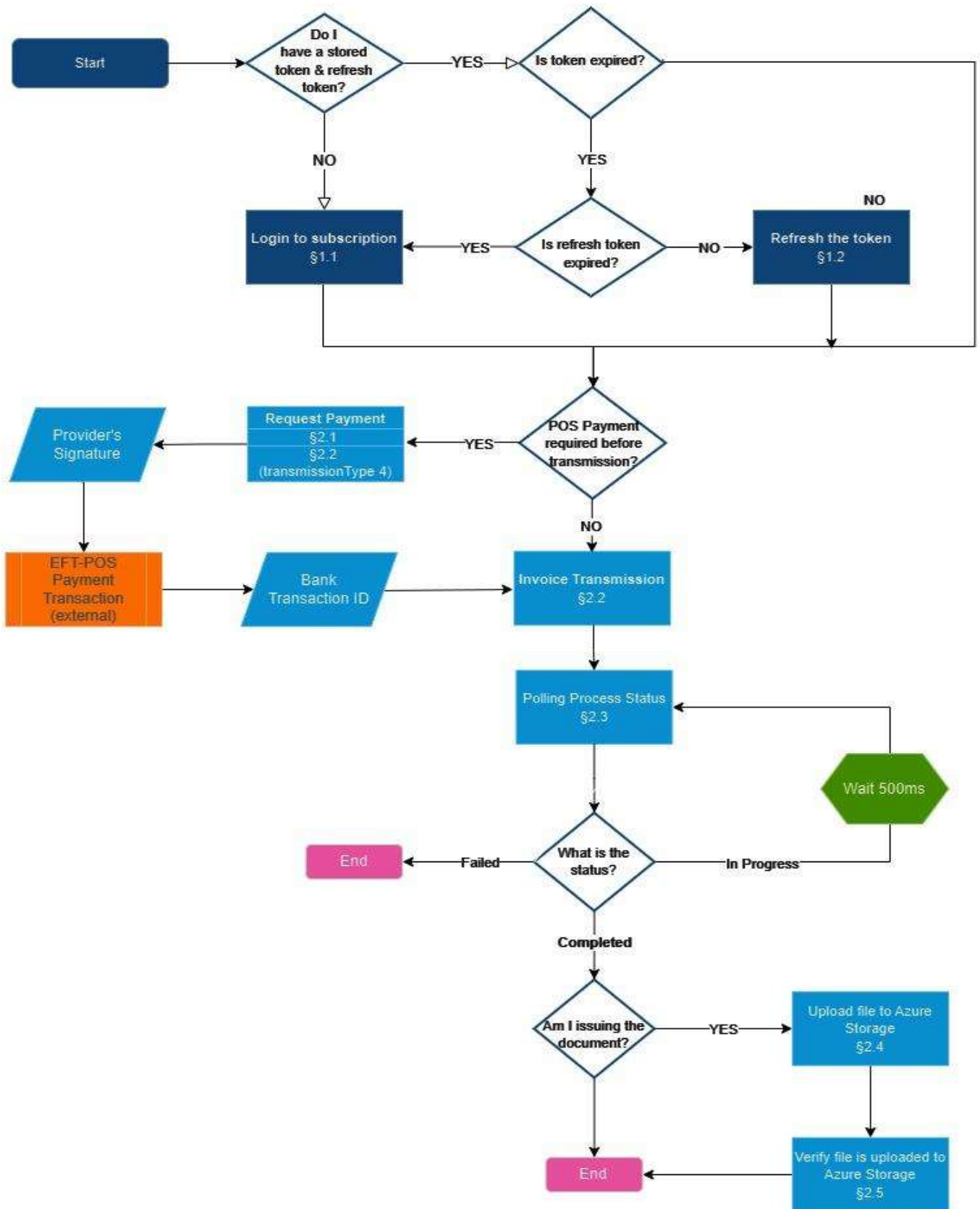
---

## Solution

The solution utilizes an API that operates over the HTTP protocol and returns data in JSON format. Clients send requests to communicate with the server. For instance, when a user logs in with their credentials or submits invoice details, the server responds accordingly, such as providing an authentication result.

Parochos offers two APIs for direct client communication via HTTP requests. The MyAccount API handles client authentication, while the Parochos API includes services for sending invoices to AADE. Consequently, there are two endpoints: one for the authentication server and another for the Parochos API.

# Flow Chart



# Authentication

The Parochos API communicates with the authentication server of the system called Account. The identity server is responsible for generating the authentication token necessary for all Parochos API methods. Therefore, there are two endpoints: one for the authentication server and one for the Parochos API.

## Login

The login method authenticates the user to the system, requiring the user's credentials and the activated subscription's secret key, as shown in the screenshot below. This key uniquely identifies and validates the user's access. The method generates and returns an authentication token (JWT), a refresh token, and the user's subscription information. **We recommend you use api user credentials which is created in our portal, which don't expire (Api user, Api user's password).**

### Request Parameters

Field Name	Data Type	Mandatory	Description
subscriptionKey	String	Yes	Your unique subscription key
email	String	Yes	User's email address or <b>Api user</b>
password	String	Yes	User's password or <b>Api user's password</b>

### Response Fields

Field Name	Data Type	Description
jwt	String	JSON Web Token for authentication
jwtExpiration	DateTime	Expiration date of the JWT
jwtRefreshToken	String	Token to refresh the JWT
jwtRefreshTokenExpiration	DateTime	Expiration date of the refresh token
url1	String	Base URL for subsequent API calls

Request Example	
<b>POST</b>	<b>/api/account/loginToSubscription</b>
<pre>{   "subscriptionKey": "1EE21B81418434A851E7AF0CED9B28C",   "email": <b>API User</b>   "password": <b>API Password</b> }</pre>	
Response Example	
<pre>{   "jwt": "eyJhbGciOiJIUzI1NiIsInR5cCI6IkpXVCJ9...",   "jwtExpiration": "2024-10-25T09:54:11Z",   "jwtRefreshToken": "ryRccc6OZRR4LVWTDfjX/MjwWIhuvb9/vsRRLGOgEm8=",   "jwtRefreshTokenExpiration": "2024-12-04T09:24:11.627963Z",   "url1": <a href="https://beta-srv.parochos.gr/">https://beta-srv.parochos.gr/</a> }</pre>	
Status	
<b>200 OK</b>	
<b>400</b>	When parameters are invalid
<b>403</b>	If the username, password or secret key is invalid

**"The url1 returned by the call should not be hardcoded. Instead, it should be dynamically obtained from the response, as the server address may change."**

## Refresh Token

Whenever an access token is required to access a specific method, the client must verify if the token has expired. If it has, the client invokes the refresh method, providing a refresh token and the expired JWT to the authentication server. The server then generates a new access token (JWT) and a refresh token with updated expiration dates. If the refresh token has expired or the refresh method call fails, the client must re-authenticate using the login method.

### Request Parameters

Field Name	Data Type	Mandatory	Description
token	String	Yes	The expired JWT
refreshToken	String	Yes	A valid refresh token

### Response Fields

Field Name	Data Type	Description
jwt	String	JSON Web Token for authentication
jwtExpiration	DateTime	Expiration date of the JWT
jwtRefreshToken	String	Token to refresh the JWT
jwtRefreshTokenExpiration	DateTime	Expiration date of the refresh token

### Request Example

**POST** /api/token/Refresh

```
{
  "token": "eyJhbGciOiJIUzI1NiIsInR5cCI6IkpXVCJ9...",
  "refreshToken": "ryRccc6OZRR4LVWTD/MjwWIhuvb9/vsRRLGOgEm8"
}
```

### Response Example

```
{
  "jwt": "eyJhbGciOiJIUzI1NiIsInR5cCI6IkpXVCJ9...",
  "jwtExpiration": "2024-10-25T09:54:11Z",
  "jwtRefreshToken": "ryRccc6OZRR4LVWTDfjX/MjwWIhuvb9/vsRRLGOgEm8=",
  "jwtRefreshTokenExpiration": "2024-12-04T09:24:11.627963Z"
}
```

### Status

**200 OK**

---

## API User

An API User is a personalized service account created through the account web portal, characterized by the following:

- The user role is assigned the minimum set of access rights necessary to access the Parochos API, but not the Parochos web portal.
- This user is unique to each subscription and cannot be used across multiple subscriptions.
- A separate culture definition is assigned to this user to ensure that transmissions through the Parochos API are not influenced by the preferences of actual users.
- To create an API user, navigate to **View Subscription -> Actions -> Create API User**. The password will be provided but cannot be viewed after saving. If needed, it must be reset.

### Note

**The Parochos platform requires users to renew their passwords every six months. To ensure seamless operation, it is recommended to create an API User.**

---

## AADE Provider API Calls

The Parochos API offers a suite of methods for sending invoices to the AADE Platform. All methods require an authorization header using the Bearer scheme. The JWT returned by the loginToSubscription method should be included in the authorization header. The url1 returned by the loginToSubscription method serves as the base address for all the methods listed below.

For example: <https://beta-account.parochos.gr/>

As of version 3.0, each API call must specify the desired API version in the HTTP header using the key **X-Version**. Provider API calls can be found at {url1}/swagger, under the definition "Parochos API v3".

For example: <https://beta-srv.parochos.gr/swagger/index.html>

## Request Payment

Invoice transmissions involving EFT-POS payments require a Provider's signature to verify the POS payment. This signature must be committed to the final POS terminal for the bank transaction to be completed. This method naturally precedes the invoice transmission (API method Send) in the transmission flow.

The returned Provider's signature must be included in the source invoice as detailed in sections 4.1 (Tax Authorities' & UBL2.1 configured in External System) and 4.2 (Tax Authorities' & UBL2.1 configured in Parochos) under the element paymentMethods.

Note: Invoking the requestPayment method before transmitting the invoice is required only if any payment methods with an EFT-POS payment type are defined in the invoice source.

### Request Parameters

Field Name	Data Type	Mandatory	Description
externalSystemId	String	Yes	An identifier of the invoice specified by the client. Each invoice is validated based on its status and this external ID. For example, a successfully transmitted invoice with the same external ID is not allowed to be re-transmitted. Additionally, this external ID must be unique for every document type.
externalPaymentId	String	Yes	An identifier of the payment specified by the client. <u>Only</u> for request <u>without</u> using externalSystemId
issuerVatNumber	String	Yes	Issuer's TIN (VAT Number)
invoiceIssueDate	DateTime	Yes	Invoice Date <a href="#">ISO 8601</a>
companyBranch	Number	Yes	Issuer's Company Branch N/A as registered in Tax Authorities' platform
invoiceType	String	Yes	Invoice Type according to Tax Authorities' documentation
invoiceSeries	String	Yes	Series Code of Invoice issued, use to resolve invoice type
invoiceAA	String	Yes	Invoice Number
mark	Long	No	A unique registration number of the invoice provided by AADE, if available. Required only in Submit Payment scenario.
netValue	Decimal	Yes	Invoice total net value
vatAmount	Decimal	Yes	Invoice total vat amount
totalValue	Decimal	Yes	Invoice total gross value
paymentAmount	Decimal	Yes	Amount to be paid through the EFT-POS transaction
terminalId	String	Yes	The Id of the EFT-POS terminal that will perform the payment transaction
specialInvoiceCategory	Number	No	Special invoice category as defined by Tax Authorities' documentation. <b>Required</b> only for payment requests issued by restaurant (catering) businesses (value 12)
nspCode	String	Yes	Code identifier of the EFT-POS service provider. Values described in Appendix 5.

### Response Fields

Field Name	Data Type	Description
externalSystemId	String	The external identifier provided to requestPayment method
processId	Gguid	The identifier of the invoice generated by Parochos Platform. Will be null until the actual transmission is performed, through the Send method
uid	String	Identifier of the invoice required for the signature generation and for completing the EFT-POS payment
<b>paymentToken</b>		
timestamp	DateTime	The timestamp of signature creation in Greek time zone format
signature	String	The payment signature generated by Parochos Provider
amount	Decimal	The requested payment amount
signatureClearText	String	The clear text used to generate the payment signature
status	Number	The progress status of the procedure. Completed = 1, Failed = 2
errorCode	String	In case invoice upload fails, errorCode indicates the type of the error
errorMessage	String	Detailed description of the error
errorCategory	String	Indicates the category of the error. <ul style="list-style-type: none"> <li>• <b>TED</b> = Technical error by Parochos</li> <li>• <b>BED</b> = Business error by Parochos</li> </ul>

- **TTA** = Technical error by Tax Authorities
- **BTA** = Business error by Tax Authorities

#### Request Example

<b>POST</b>	<b>/api/RequestPayment</b>
Host	Use the <b>url1</b> returned from the <b>/api/account/loginToSubscription</b> endpoint.
HTTP Header	Key: <b>X-Version</b> Value: <b>3.0 *required</b>
<pre>{   "externalSystemId": "bcadd6ae-e8a6-5r84-g3da-23cbb7vs764k",   "issuerVatNumber": "802023570",   "invoiceIssueDate": "2025-03-04T00:00:00Z ",   "companyBranch": "0",   "invoiceType": "11.1",   "invoiceSeries": "ΑΑΠ-001",   "invoiceAA": 63,   "netValue": 10.00,   "vatAmount": 2.40,   "totalValue": 12.40,   "paymentAmount": 12.40,   "terminalId": "01234567",   "nspCode": "2" }</pre>	

#### Response Example

<pre>{   "processId": null,   "externalSystemId": "ed13ff98-132e-4946-bd66-d570aad3ba41",   "uid": "B7F6E8438F3A6CEA2D5524BDDD27B36883DB9EC1",   "paymentToken": {     "timestamp": "2025-03-04T11:09:19.3809595+02:00",     "signature": "30450220560CE34536C88B4AD2A10AB335140E3550E17CE85A3..",     "amount": 12.40,     "signatureClearText":       "B7F6E8438F3A6CEA2D5524BDDD27B36883DB9EC1;;20250304110919;1000;240;1240;1240;01234567"   },   "status": 1,   "errorCategory": null,   "errorCode": null,   "errorMessage": null }</pre>	
---	--

#### Status

<b>200 OK</b>	
<b>401</b>	Unauthorized request. The JWT is either invalid or expired

---

## Invoice Transmission

The Parochos Platform API provides the send method for multiple transmissions. The required property `transmissionType` determines the type of transmission. The invoice transmission is responsible for sending the invoice data to the Parochos Platform, where Parochos certifies the invoice's content and transmits it to the AADE platform.

When issuing the invoice's PDF document, the parameter `transmissionType` should be set to 1. In this case, the design of at least one print form is required. The print form design can be configured through the Parochos Platform.

Alternatively, automatic transmission of documents, without PDF creation, is available when `transmissionType` is set to value 5. In this case, user may export to PDF the default HTML view of the invoice through the Provider's public viewer page.

**Please note that after five consecutive failed attempts to send the document to the Provider, the platform's mechanism is activated. After one hour, another attempt to send the document can be made.**

For Order Forms, the Points of Service and the flow of actions (opening, closing, cancellation) are determined to manage the Order Forms. Parochos exclusively manages the Points of Service.

## Request Parameters

Field Name	Data Type	Mandatory	Description
externalSystemId	String	Yes	An identifier of the invoice specified by the client. Each invoice is validated based on its status and this external ID. For example, a signed invoice with the same external ID cannot be re-sent.
source	String	Yes	Json serialized object that contains the data to be send. See section 4. Invoice Source Data analysis.
identifier	String	Yes	The identifier of the template used to map the incoming invoice data to the model required by the AADE Provider. This value must be set to " <b>Parochos</b> ".
transmissionType	Number	No	Determines the required type of transmission ( <b>Default Value = 0</b> ): <ul style="list-style-type: none"> <li>● <b>0</b>: Transmits the invoice to the Tax Authorities Platform.</li> <li>● <b>1</b>: Transmits the invoice to the Tax Authorities Platform and generates an invoice PDF file.</li> <li>● <b>5</b>: Transmits the invoice to the Tax Authorities Platform and update the status to <b>completed</b>.</li> </ul>
attachments	String	No	Base64 encoded binary data. A draft .txt file of the invoice. It is the Base64 representation string of the byte array of the file.
content	String	No	

## Response Fields

Field Name	Data Type	Description
externalSystemId	String	The external identifier provided to send method.
processId	Guid	The identifier of the invoice generated by Parochos Platform.
<b>Signing</b>		
uid	String	Identifier of the invoice provided by AADE.
mark	Long	Unique registration number of the invoice provided by AADE.
authenticationCode	String	Authentication code of the invoice provided by AADE.
qrCode	String	The URL where the client can see the invoice and download its files produced by the system.
pdfUploaded	Boolean	Specify whether the PDF of the invoice is uploaded or not.
pdfFileUrl	String	Parochos Azure storage URL with read rights to download the invoice PDF file.
publishStatus	Number	The status of the B2G invoice transmission applies only to B2G invoices: <b>Pending = 0, Sending = 1, Transmitted = 2, Processing = 3, Paid = 4, Rejected = 5, Under Query = 6, Failed = 10</b>
<b>PaymentTokens</b>	Array	
timestamp	DateTime	Timestamp of Signature Creation in Greek Time Zone Format.
signature	String	Payment Signature Generated by Parochos Provider.
amount	Decimal	Request payment amount.
terminalId	String	The Id of the EFT-POS terminal that will perform the payment transaction.
uid	String	Identifier of the invoice required for signature generation and for completing the EFT-POS payment.
timestamp	DateTime	The timestamp of invoice creation in UTC.
status	Number	The progress status of the procedure: <b>In Progress = 0, Completed = 1, Failed = 2</b>
errorSeverity	Number	<b>Warning = 1, Error = 2</b>
errorCode	String	In case the invoice upload fails, errorCode indicates the type of error.
errorMessage	String	A detailed description of the error.
errorCategory	String	Indicates the category of the error: <ul style="list-style-type: none"> <li>● <b>TED</b>: Technical error by Parochos</li> <li>● <b>BED</b>: Business error by Parochos</li> <li>● <b>TTA</b>: Technical error by Tax Authorities</li> <li>● <b>BTA</b>: Business error by Tax Authorities</li> </ul>

Request Example	
<b>POST</b>	<b>/api/Send</b>
Host	Use the <b>url1</b> returned from the <b>/api/account/loginToSubscription</b> endpoint.
HTTP Header	Key: <b>X-Version</b> Value: <b>3.0 *required</b>
<pre>{   "externalSystemId": "bcadd6ae-e8a6-5r84-g3da-23cbb7vs764k",   "identifier": "Parochos",   "transmissionType": 5,   "source": {...} }</pre>	
Response Example	
<pre>{   "signing": {     "paymentTokens": [],     "authenticationCode": "62E99BCE1779E76A000A9A2FD6EBD64CF4EEE343",     "qrCode": "https://beta-srv.parochos.gr/FileDocument/Get/697fa249-e711-4dab-d8de-08dcf575bce1",     "pdfUploaded": false,     "pdfFileUrl": null,     "publishStatus": null,     "cancellationMark": null,     "uid": " null ",     "mark": null   },   "processId": "697fa249-e711-4dab-d8de-08dcf575bce1",   "externalSystemId": "XXX1",   "errorSeverity": null,   "timeStamp": "2024-10-29T12:01:34.8030957",   "attachments": null,   "status": 1 }</pre>	
Status	
<b>200 OK</b>	
<b>401</b>	Unauthorized request. The JWT is either invalid or expired

Request Example	
<b>POST</b>	<b>/api/Get</b>
Host	Use the <b>url1</b> returned from the <b>/api/account/loginToSubscription</b> endpoint.
HTTP Header	Key: <b>X-Version</b> Value: <b>3.0 *required</b>
<pre>{   "externalSystemId": "bcadd6ae-e8a6-5r84-g3da-23cbb7vs764k", }</pre>	
Response Example	
<pre>{   "signing": {     "paymentTokens": [],     "authenticationCode": "FC8369FDA587D5B964FBD641356732F3BBC71F7D",     "qrCode": "https://beta-srv.parochos.gr/fd/3ea67dde0bb94f339ed808deaa6dde3f:1",     "qrUrlAADE":       "https://mydataapidev.aade.gr/TimologioQR/QRInfo?q=uK4ktOUcTrjiQ%2fnjMSGoX6nZoLUkQZZ16cJPixudydhvmM4e8aakJx7LEiCZ7xPw%2bMci%2bqf1Y59Y2ZS0%2bOoWudFu8klgUhqZmjCKjhpshGE%3d",     "pdfUploaded": false,     "pdfFileUrl": null,     "publishStatus": 0,     "cancellationMark": null,     "uid": "A198335EC131EBF5D5E2A20AC7A303B1F22B8F7F",     "mark": 400001962023921   },   "processId": "7f221a9e-f5f5-4d14-9ed9-08deaa6dde3f",   "externalSystemId": "000000015987",   "errorSeverity": null,   "timeStamp": "2026-05-05T09:13:24.4297953",   "attachments": null,   "status": 1,   "errorCategory": null,   "errorCode": null,   "errorMessage": null }</pre>	
Status	
<b>200 OK</b>	
<b>401</b>	Unauthorized request. The JWT is either invalid or expired

## Polling process status

The send method will return the initial status of the process along with Parochos's unique ProcessId. While the status is InProgress, the client should continue calling the get method, passing either the system's external identifier or Parochos's unique ProcessId.

### Request Parameters

Field Name	Data Type	Mandatory	Description
processId	Guid	<b>No</b>	Parochos's unique processId as returned by the api/send method.
externalSystemId	String	<b>No</b>	The external identifier provided as input to the api/send method.

### Response Fields

Description
The same response as the /api/send method.

Request Example	
<b>POST</b>	<b>/api/Get</b>
Host	Use the <b>url1</b> returned from the <b>/api/account/loginToSubscription</b> endpoint.

HTTP Header	Key: <b>X-Version</b> Value: <b>3.0 *required</b>
<pre>{   "externalSystemId": "185" }</pre>	
Response Example	
<pre>{   "processId": "fe340fa6-444a-4ce7-1a71-08d9c47b8688",   "externalSystemId": "185",   "signing": {     "uid": "19D8A9187F64B2D1DBD2D91C7908A1D8A4F94FB6",     "mark": 400001859268171,     "authenticationCode": "71B069FE6AFF018DD3073011F478EEA172E58546",     "qrCode": "https://localhost:6001/FileDocument/Get/fe340fa6-444a-4ce7-1a71-08d9c47b8688",     "pdfUploaded": false,     "pdfFileUrl": null,     "publishStatus": 0,     "paymentTokens": [       {         "timestamp": "2024-03-13T12:20:20.700Z",         "signature": "6B42CBC7C1CC02724095E6169F178[...]49FBB90E9FFA4D22944B2BBC02F1E27CFE57C8",         "amount": 3259.19       }     ]   },   "status": 1,   "timeStamp": "2024-03-13T14:15:08.6338557Z" }</pre>	
Status	
<b>200 OK</b>	
<b>401</b>	Unauthorized request. The JWT is either invalid or expired

## Granting Write Access to Azure Storage

When an invoice has been successfully transmitted to AADE, and the client is responsible for generating the invoice's PDF file, the following process must be followed. The client must create the PDF file of the invoice and request a Shared Access Signature (SAS) to grant limited access to Azure Storage, allowing the file to be uploaded there.

### Request Parameters

Field Name	Data Type	Mandatory	Description
processId	Guid		Parochos's unique processId as returned by the api/send method.
externalSystemId	String	YES	The external identifier provided as input to the api/send method.
fileName	String	YES	The name of the PDF file.
fileSize	Number	YES	The size is in bytes of the PDF file.

### Response Fields

Field Name	Data Type	Description
uploadUrl	String	Azure storage url.
status	Guid	Upload Request Status: <b>Success: 1, Failed: 2</b>
errorCode	String	In the event of an upload request failure, the errorCode parameter will specify the type of error encountered.

errorMessage	Long	Detailed description of the error.
errorCategory	String	Indicates the category of the error: <ul style="list-style-type: none"> <li>● <b>TED</b>: Technical error by Parochos</li> <li>● <b>BED</b>: Business error by Parochos</li> <li>● <b>TTA</b>: Technical error by Tax Authorities</li> <li>● <b>BTA</b>: Business error by Tax Authorities</li> </ul>

Request Example	
<b>POST</b>	<b>/api/UploadFileRequest</b>
Host	Use the <b>url1</b> returned from the <b>/api/account/loginToSubscription</b> endpoint.
HTTP Header	Key: <b>X-Version</b> Value: <b>3.0 *required</b>
<pre>{   "externalSystemId": "185",   "fileName": "Invoice.pdf",   "fileSize": 33564 }</pre>	
Response Example	
<pre>{   "uploadurl": "url",   "status": 1 }</pre>	
Status	
<b>200 OK</b>	
<b>401</b>	Unauthorized request. The JWT is either invalid or expired

---

## Upload file to Azure

Use the Azure storage URL to send a new PUT HTTP request.

<b>Request Syntax:</b>	PUT <uploadUrl> HTTP/1.1	
<b>Request Headers:</b>	Content-Type:	application/pdf
	x-ms-blob-type:	BlockBlob
<b>Request Body:</b>	Content of the PDF file as binary	

[\(See here for more details.\)](#)

→ The **uploadUrl** was obtained from the response of **/api/uploadFileRequest** endpoint.

## Verification of Upload to Azure Storage

After the client completes the file upload to Azure Storage, this method should be called by Parochos to verify the file's content and finalize the process.

### Request Parameters

Field Name	Data Type	Mandatory	Description
processId	Guid		Parochos's unique processId as returned by the api/send method.
externalSystemId	String	YES	The external identifier provided as input to the api/send method.

### Response Fields

Field Name	Data Type	Description
status	Number	Status of the verification request: <ul style="list-style-type: none"> <li>● <b>Success:</b> 1</li> <li>● <b>Failed:</b> 2</li> </ul>
errorCode	String	In the event of a verification request failure, the errorCode parameter will specify the type of error encountered.
errorMessage	String	Detailed description of the error.
errorCategory	String	Indicates the category of the error: <ul style="list-style-type: none"> <li>● <b>TED:</b> Technical error by Parochos</li> <li>● <b>BED:</b> Business error by Parochos</li> <li>● <b>TTA:</b> Technical error by Tax Authorities</li> <li>● <b>BTA:</b> Business error by Tax Authorities</li> </ul>

### Request Example

**POST**

**/api/Finalize**

Host

Use the **url1** returned from the **/api/account/loginToSubscription** endpoint.

HTTP Header

Key: **X-Version** Value: **3.0 \*required**

```
{
  "externalSystemId": "185"
}
```

### Response Example

```
{
  "status": 1,
  "errorCode": null,
  "errorCategory": null,
  "errorMessage": null
}
```

### Status

**200 OK**

**401** Unauthorized request. The JWT is either invalid or expired

## File Retrieval and Download Process

Once the entire process is successfully completed, the client can download all uploaded files at any time. The request will return download URLs for the PDF uploaded by the client, the actual XML file transmitted to the Tax Authorities, and the e-Invoice for PEPPOL.

### Request Parameters

Field Name	Data Type	Mandatory	Description
processId	Guid		Parochos's unique processId as returned by the api/send method.
externalSystemId	String		The external identifier provided as input to the api/send method.
fileIdentifiers	Array		List of file identifiers. If the list is empty, all files will be returned. Accepted values are: <ul style="list-style-type: none"> <li>● PDF for the invoice PDF</li> <li>● MydataXML for the Tax Authorities XML file</li> <li>● eInvoiceXML for the PEPPOL XML file</li> </ul>

### Response Fields

Field Name	Data Type	Description
downloadUrl	String	Azure storage URL.
fileName	String	Name of the uploaded file.
status	Number	Status of the verification request: <b>Success: 1, Failed: 2</b>
errorCode	String	In the event of a verification request failure, this parameter indicates the type of error encountered.
errorMessage	String	Detailed description of the error.
errorCategory	String	Indicates the category of the error: <ul style="list-style-type: none"> <li>● <b>TED</b>: Technical error by Parochos</li> <li>● <b>BED</b>: Business error by Parochos</li> <li>● <b>TTA</b>: Technical error by Tax Authorities</li> <li>● <b>BTA</b>: Business error by Tax Authorities</li> </ul>

### Request Example

<b>POST</b>	<b>/api/getFiles</b>
Host	Use the <b>url1</b> returned from the <b>/api/account/loginToSubscription</b> endpoint.
HTTP Header	Key: <b>X-Version</b> Value: <b>3.0 *required</b>

```
{
  "externalSystemId": "185"
}
```

### Response Example

```
"files": [
  {
    "downloadUrl": "url",
    "fileName": "myDataXML.xml"
  },
  {
    "downloadUrl": "url",
    "fileName": "eInvoiceXML.xml",
    "fileIdentifier": "eInvoiceXML"
  },
  {
    "downloadUrl": "url",
    "fileName": "invoice",
    "fileIdentifier": "PDF"
  }
],
"status": 1
```

### Status

**200 OK**

## Downloads publish logs (B2G only)

When the invoice publishing type is B2G (2) and the entire process has been successfully completed, the client can download all the logs of the publishing process at any time. The request returns a response status success indicator, along with a list of published logs.

### Request Parameters

Field Name	Data Type	Mandatory	Description
processId	Guid		
externalSystemId	String	YES	The external identifier provided as input to api/send method.

### Response Fields

Field Name	Data Type	Description
publishLogs		
message	String	Publish log entry detailed message. Possible error messages described in Appendix 4.
status	Number	Publish log entry status. Values and aliases: <ul style="list-style-type: none"> <li>● Pending = 0 AB = 1 (e-Invoice received by KE.D.)</li> <li>● <b>AP</b> = 2 (Accepted)</li> <li>● <b>RE</b> = 3 (Rejected)</li> <li>● <b>IP</b> = 4 (In Process)</li> <li>● <b>UQ</b> = 5 (Under Query)</li> <li>● <b>CA</b> = 6 (Conditionally Accepted)</li> <li>● <b>PD</b> = 7 (Paid)</li> <li>● <b>SR</b> = 50 (Soft Rejected)</li> </ul> As described in Peppol BIS v3 UNCL4343 Subset (except for SR).
timestamp	Date Time	The log entry timestamp.
status	Number	Status of the request. <b>Success =1, Failed =2</b>
errorCategory	String	In case request fails, indicates the type of the error.
errorCode	String	Detailed description of the error.
errorMessage	String	Indicates the category of the error. <ul style="list-style-type: none"> <li>● <b>TED</b> = Technical error by Parochos</li> <li>● <b>BED</b> = Business error by Parochos</li> <li>● <b>TTA</b> = Technical error by Tax Authorities</li> <li>● <b>BTA</b> = Business error by Tax Authorities</li> </ul>

Request Example	
<b>POST</b>	<b>/api/GetPublishLogs</b>
Host	Use the <b>url1</b> returned from the <b>/api/account/loginToSubscription</b> endpoint.
HTTP Header	Key: <b>X-Version</b> Value: <b>3.0 *required</b>
<pre>{   "externalSystemId": "185" }</pre>	
Response Example	
<pre>{   "publishLogs": [     {       "message": "E-invoice queued for publishing to the Public Authority",       "status": 0,       "timestamp": "2025-03-04T09:50:55.7796981"     }   ],   "status": 1,   "errorCategory": null,   "errorCode": null,   "errorMessage": null }</pre>	
Status	
<b>200 OK</b>	
<b>401</b>	Unauthorized request. The JWT is either invalid or expired

## Submit Payment

Besides the requirement for a Provider’s Signature upon invoice transmission with the EFT-POS payment method specified, there might also be cases of EFT-POS payments occurring after the invoice transmission.

To handle such post-transmission EFT-POS payment requirements, the Parochos Platform API introduces a new API method, `SubmitPayment`, which follows the invoice transmission (`Send API` method) in the transmission flow. The `SubmitPayment` method invocation must be combined with the `RequestPayment` method to obtain the required Provider’s Signature that verifies the payment at the POS terminal.

Before invoking the `SubmitPayment` method, the user must first invoke the `RequestPayment` method to get the required payment token information (signature, timestamp, amount, uid). When the `RequestPayment` occurs after invoice transmission, the `mark` input parameter is required and must not be undefined.

Refer to section 2.1, Request Payment, for completing the first step required to proceed with the `SubmitPayment` method.

## Request Parameters

Field Name	Data Type	Mandatory	Description
externalSystemId	String	Yes	
mark	Long	Yes	
paymentInfo	Array		
type	Number	Yes	Payment method type code. At least one entry must be of type EFT-POS (type=7).
amount	Decimal	Yes	Payable amount for the payment type specified.
paymentMethodInfo	String	No	Text description for specified payment.
tipAmount	Decimal	No	An optional extra amount paid through the EFT-POS transaction as a tip. Applicable only for payment method type EFT-POS (type=7)
transactionId	String	Yes	Bank transaction identifier returned by the POS terminal. Required only for payment method type EFT-POS (type=7).
signature	String	Yes	Parochos Provider payment signature returned by <b>requestPayment</b> method. Required only for payment method type EFT-POS (type=7).
terminalId	String	Yes	The Id of the EFT-POS terminal that performed the payment transaction.

## Response Fields

Field Name	Data Type	Description
externalSystemId	String	The external identifier provided to “send” or “requestPayment” method.
processId	Guid	The identifier of the invoice generated by Parochos Platform.
paymentMark	String	Unique registration number of the submitted payment provided by AADE.
status	Number	The progress status of the procedure. <ul style="list-style-type: none"> <li>InProgress = 0</li> <li>Completed = 1</li> <li>Failed = 2</li> </ul>
errorCode	String	In case invoice upload fails, error code indicates the type of the error.
errorMessage	String	Detailed description of the error.
errorCategory	String	Indicates the category of the error. <ul style="list-style-type: none"> <li>TED = Technical error by Parochos</li> <li>BED = Business error by Parochos</li> <li>TTA = Technical error by Tax Authorities</li> <li>BTA = Business error by Tax Authorities</li> </ul>

Request Example	
<b>POST</b>	<b>/api/submitPayment</b>
Host	Use the <b>url1</b> returned from the <b>/api/account/loginToSubscription</b> endpoint.
HTTP Header	Key: <b>X-Version</b> Value: <b>3.0 *required</b>
<pre> {   "externalSystemId": "15da21c1-8354-43b5-8c0b-148e54549e46",   "mark": 400001954838780,   "paymentInfo": [     {       "type": 7,       "amount": 12.40       "paymentMethodInfo": "",       "tipAmount": 0,       "transactionId": "1234567890987654326",       "signature": "3044022064537358628766A233E9925599",       "terminalId": "01234567"     }   ] } </pre>	
Response Example	
<pre> {   "processId": "7a6d6eab-1f72-41cf-72ac-08dd58813a4f",   "externalSystemId": "15da21c1-8354-43b5-8c0b-148e54549e46",   "uid": "4724FC97EE8AFF1F20EF1B0C47102CF2FC9DC9C6",   "paymentToken": {     "timestamp": "2025-03-04T13:23:30.4485083+02:00",     "signature": "3044022064537358628766A233E9925599..."     "amount": 12.40,     "signatureClearText": "4724FC97EE8AFF1F20EF1B0C47102CF2FC9DC9C6;400001947543371;20250304132330;1000;240;1240;1240;01234567"   },   "status": 1,   "errorCategory": null,   "errorCode": null,   "errorMessage": null } </pre>	
Status	
<b>200 OK</b>	
<b>401</b>	Unauthorized request. The JWT is either invalid or expired

## Cancel Payment

If a requested payment token (Provider's Signature) is not used in a bank transaction and the user decides that the token is no longer needed, the Parochos Platform API provides a new method called `cancelPayment`. This method cancels the previously requested payment token.

### Request Parameters

Field Name	Data Type	Mandatory	Description
<code>externalSystemId</code>	String	Yes	The external identifier provided to "send" or "requestPayment" method.
<code>signature</code>	String	Yes	Parochos Provider payment signature that will be cancelled.
<code>transactionId</code>	String	No	Bank transaction identifier returned by the POS terminal for the completed payment requested to be cancelled. Required only when cancelling a completed payment.
<code>voidTransactionId</code>	String	No	Payment cancellation identifier as returned by the POS terminal. Required only when cancelling a completed payment.

### Response Fields

Field Name	Data Type	Description
<code>externalSystemId</code>	String	The external identifier provided to "send" or "requestPayment" method.
<code>processId</code>	Guid	The identifier of the invoice generated by Parochos Platform.
<code>signature</code>	String	Parochos Provider payment signature.
<code>status</code>	Number	The progress status of the procedure. <ul style="list-style-type: none"> <li>Completed = 1</li> <li>Failed = 2</li> </ul>
<code>errorCode</code>	String	In case invoice upload fails, <code>errorCode</code> indicates the type of the error.
<code>errorMessage</code>	String	Detailed description of the error.
<code>errorCategory</code>	String	Indicates the category of the error. <ul style="list-style-type: none"> <li>TED = Technical error by Parochos</li> <li>BED = Business error by Parochos</li> <li>TTA = Technical error by Tax Authorities</li> <li>BTA = Business error by Tax Authorities</li> </ul>

### Request Example

<b>POST</b>	<code>/api/cancelPayment</code>
Host	Use the <code>url1</code> returned from the <code>/api/account/loginToSubscription</code> endpoint.
HTTP Header	Key: <b>X-Version</b> Value: <b>3.0 *required</b>
<pre>{   "externalSystemId": "8ccb3dc1-2830-498e-adab-7107ef87dd12",   "signature": "3046022100D76859F79F3269A1860EE2D640F6F96FD1BCF4..." }</pre>	

### Response Example

<pre>{   "processId": null,   "externalSystemId": "8ccb3dc1-2830-498e-adab-7107ef87dd12",   "signature": "3046022100D76859F79F3269A1860EE2D640F6F96FD1BCF4..."   "status": 1,   "errorCategory": null,   "errorCode": null,   "errorMessage": null }</pre>	
--	--

### Status

<b>200 OK</b>	
---------------	--

---

401

Unauthorized request. The JWT is either invalid or expired

## Get Payments

At any time, during or after the transmission process, the user can invoke this method to retrieve all payment requests associated with a specific invoice external identifier, along with their related information.

### Request Parameters

Field Name	Data Type	Mandatory	Description
externalSystemId	String	Yes	The external identifier provided to “send” or “requestPayment” method.

### Response Fields

Field Name	Data Type	Description
externalSystemId	String	The external identifier provided to “send” or “requestPayment” method.
payments	Array	
signature	String	Parochos Provider payment signature.
timestamp	DateTime	Provider’s Signature creation timestamp.
amount	Decimal	The payable amount bound to the signature.
status	Number	Payment request status. <b>Pending = 0, Completed = 1, Cancelled = 2, PendingTransmission = 3, Expired = 10</b>
transactionId	String	Bank transaction identifier returned by the POS terminal.
tipAmount	Decimal	Optional paid tip amount during the EFT-POS transaction.
paymentMark	Long	Unique registration number of the submitted payment provided by AADE.
terminalId	String	The Id of the EFT-POS terminal that will perform the payment transaction.
uid	String	Identifier of the invoice required for the signature generation and for completing the EFT-POS payment.

### Request Example

<b>GET</b>	<b>/api/getPayments/{externalSystemId}</b>
Host	Use the <b>url1</b> returned from the <b>/api/account/loginToSubscription</b> endpoint.
HTTP Header	Key: <b>X-Version</b> Value: <b>3.0 *required</b>

### Response Example

```
{
  "externalSystemId": "e16e7447-3a2b-459a-af55-a75674c86b1d",
  "payments": [
    {
      "status": 0,
      "transactionId": "",
      "voidTransactionId": "",
      "tipAmount": 0.0000000,
      "paymentMark": null,
      "uid": "3504F0E9260054A9A0342A9D1A8DDD8EB98C6160",
      "terminalId": "01234567",
      "timestamp": "2025-03-10T10:14:07.2842196+02:00",
      "signature": "3045022100D2D98C4B3621ABF20B5644A2B9D8244B1BE531503B3...",
      "amount": 12.40,
      "signatureClearText": null
    }
  ],
  "status": 1
}
```

### Status

<b>200 OK</b>	
<b>401</b>	Unauthorized request. The JWT is either invalid or expired

## Cancel

The Cancel method is used to cancel a Delivery Note that has been submitted. It cannot be used for other types of documents except for type 9.3 Delivery Note.

Request	
<b>POST</b>	<b>api/Cancel</b>
Host	Use the <b>url1</b> returned from the <b>/api/account/loginToSubscription</b> endpoint.
HTTP Header	Key: <b>X-Version</b> Value: <b>3.0 *required</b>

Parameter	Values	Description
mark [optional]	Long	Mark of Delivery Note
externalSystemId [optional]	List	The external identifier provided as input to api/send method.

Response	Status	Response	Values	Description
200		cancellationMark	String	Cancellation mark of Delivery Note as returned by AADE.
		success	String	Status of the verify request. true = Success, false = failure.
		errorCategory	String	Indicates the category of the error. TED = Technical error by Parochos BED = Business error by Parochos TTA = Technical error by Tax Authorities BTA = Business error by Tax Authorities
		errorCode	String	In case invoice upload fails, errorCode indicates the type of the error.
		errorMessage	String	Detailed description of the error.
401				Unauthorized request. The jwt is either invalid or expired.

## Methodology/Flow for payments

### Case 1: Payment Before Invoice

- Call requestPayment. You generate a unique externalSystemId. Since the invoice doesn't exist yet, the mark field remains empty.
- Then we issue the invoice using the same externalSystemId we used for our request payment. This allows the AADE system to "pair" the successful transaction with the document.

### Case 2: Payment After Invoice

- Call requestPayment. Here, you must fill the externalSystemId **and** provide the mark of the invoice that was already issued.

- 
- Then we need to call the submitPayment to finalize the process. Since the invoice is already recorded, this call is the "closing" action that tells myDATA the specific invoice has been settled via a specific provider transaction. We need to fill the mark and the externalSystemId fields.

### **Case 3: Multiple Invoices (The 8.4 Receipt)**

- We issued two or more invoices and the client wants to pay them, in a single transaction.
- We call the requestPayment method and fill the externalSystemId field. We then issue an invoice, type 8.4, and use the same externalSystemId we used for our requestPayment.
- 8.4 should contain in the correlatedInvoices section the invoices that the payment is about. This method could also be used for Case 2.

# Point of Service Management

The order form is a document intended for restaurant businesses, and it must specify the Point of Service. Therefore, managing and monitoring Points of Service is mandatory.

## Set State

Parochos manages Points of Service using the SetState method. The actions related to Points of Service include opening, closing, and transferring to another Point of Service.

### Request Parameters

Field Name	Data Type	Mandatory	Description
companyBranchCode	String	Yes	Company Branch: Not Applicable (N/A) as registered on the Tax Authorities' platform.
PointOfService	String	Yes	The name of Point of Service to change.
targetPointOfService	String	Yes	The name of the Point of Service to transfer, in the case of transfer and merger.
actionKind	Number	Yes	Point of Service action kinds. <b>Open = 0, Close = 1, Transfer = 2</b>

### Response Fields

Field Name	Data Type	Description
success	String	Status of the verify request. <b>Success = true, Failure = false</b>
errorCategory	String	Indicates the category of the error. <ul style="list-style-type: none"><li>• <b>TED</b> = Technical error by Parochos</li><li>• <b>BED</b> = Business error by Parochos</li><li>• <b>TTA</b> = Technical error by Tax Authorities</li><li>• <b>BTA</b> = Business error by Tax Authorities</li></ul>
errorCode	String	In case invoice upload fails, error code indicates the type of the error.
errorMessage	String	Detailed description of the error.

### Request Example

**POST** `api/pointOfService/SetState`

Host Use the `url1` returned from the `/api/account/loginToSubscription` endpoint.

HTTP Header Key: **X-Version** Value: **3.0 \*required**

```
{
  "companyBranchCode": "0",
  "pointOfService": "T13",
  "targetPointOfService": "",
  "actionKind": 0
}
```

### Response Example

```
{
  "success": true,
  "errorCategory": null,
  "errorCode": null,
  "errorMessage": null
}
```

### Status

**200 OK**

**401** Unauthorized request. The JWT is either invalid or expired

## Assign Document

The API method used to assign Point of Service and related transactions to a transmitted invoice to allow closing the Point of Service.

### Request Parameters

Field Name	Data Type	Mandatory	Description
companyBranchCode	String	Yes	Company Branch N/A is registered in Tax Authorities' platform.
pointOfService	String	Yes	The name of Point of Service to be changed.
processId	String	Yes	The identifier of the invoice generated by Parochos Platform.
externalSystemId	String	Yes	An identifier of the invoice specified by the client.

### Response Fields

Field Name	Data Type	Description
success	String	Status of the verify request. <b>Success</b> = true, <b>Failure</b> = false
errorCategory	String	Indicates the category of the error. <ul style="list-style-type: none"><li>• TED = Technical error by Parochos</li><li>• BED = Business error by Parochos</li><li>• TTA = Technical error by Tax Authorities</li><li>• BTA = Business error by Tax Authorities</li></ul>
errorCode	String	In case invoice upload fails, error code indicates the type of the error.
errorMessage	String	Detailed description of the error.

### Request Example

<b>POST</b>	<b>api/pointOfService/AssignDocument</b>
Host	Use the <b>url1</b> returned from the <b>/api/account/loginToSubscription</b> endpoint.
HTTP Header	Key: <b>X-Version</b> Value: <b>3.0 *required</b>
<pre>{   "companyBranchCode": "0",   "pointOfService": "T135",   "processId": "b624bf50-0f67-4493-d836-08dd62720e8f",   "externalSystemId": "8fe62190-0356-4e41-84b2-460aa1cec1e3 " }</pre>	

### Response Example

<pre>{   "success": true,   "errorCategory": null,   "errorCode": null,   "errorMessage": null }</pre>	
<b>Status</b>	
<b>200 OK</b>	
<b>401</b>	Unauthorized request. The JWT is either invalid or expired

## List

The API method retrieves a list of Points of Service and their balances for a specified company branch code. To manage potentially large data sets, paging is implemented using the refNumber input parameter, limiting the list to 50 records per response. The refNumber is a unique serial number assigned to registered Points of Service within Parochos, and it can be used as the starting point to fetch the next set of 50 results.

### Request Parameters

Field Name	Data Type	Mandatory	Description
companyBranchCode	String	Yes	Company Branch N/A is registered on Tax Authorities' platform.
refNumber	Number	Yes	The unique serial number which will be used as the starting point of the returned results. Minimum value 1

### Response Fields

Field Name	Data Type	Description
success	String	Status of the verify request. <ul style="list-style-type: none"> <li>• Success = true</li> <li>• Failure = false</li> </ul>
data	Array	List of Point of Service info
pointOfService	String	The name of Point of Service
balance	Decimal	The remaining balance of Point of Service
refNumber	Number	The refNumber of this Point of Service record should be incremented by one (1) to retrieve the next set of paged list results.
errorCategory	String	Indicates the category of the error. <ul style="list-style-type: none"> <li>• TED = Technical error by Parochos</li> <li>• BED = Business error by Parochos</li> <li>• TTA = Technical error by Tax Authorities</li> <li>• BTA = Business error by Tax Authorities</li> </ul>
errorCode	String	In case invoice upload fails, error code indicates the type of the error.
errorMessage	String	Detailed description of the error.

### Request Example

**POST** `api/pointOfService/List`

Host Use the `url1` returned from the `/api/account/loginToSubscription` endpoint.

HTTP Header Key: **X-Version** Value: **3.0 \*required**

```
{
  "companyBranchCode": "0",
  "pointOfService": "T135",
  "processId": "b624bf50-0f67-4493-d836-08dd62720e8f",
  "externalSystemId": "8fe62190-0356-4e41-84b2-460aa1cec1e3 "
}
```

### Response Example

```
{
  "data": [
    {
      "pointOfService": "MEZA - 55",
      "balance": 1.350000000000,
      "refNumber": 1
    }
  ]
}
```

### Status

**200 OK**

**401**

Unauthorized request. The JWT is either invalid or expired

## ListDetails

The API method retrieves a list of Points of Service and their balances for a specified company branch code. To manage potentially large data sets, paging is implemented using the refNumber input parameter, limiting the list to 50 records per response. The refNumber is a unique serial number assigned to registered Points of Service within Parochos, and it can be used as the starting point to fetch the next set of 50 results.

### Request Parameters

Field Name	Data Type	Mandatory	Description
companyBranchCode	String	Yes	Company Branch N/A is registered in Tax Authorities' platform.
refNumber	Number	Yes	An identifier of the invoice specified by the client.
pointOfService	String	Yes	The name of Point of Service
filter	Number	Yes	Values: 0 = Return all open tables 1 = Return all open tables, (both open and closed), where no association currently exists between the table and any order ticket.

### Response Fields

Field Name	Data Type	Description
success	String	Status of the verify request. <ul style="list-style-type: none"><li>● <b>Success</b> = true</li><li>● <b>Failure</b> = false</li></ul>
errorCategory	String	Indicates the category of the error. <ul style="list-style-type: none"><li>● <b>TED</b> = Technical error by Parochos</li><li>● <b>BED</b> = Business error by Parochos</li><li>● <b>TTA</b> = Technical error by Tax Authorities</li><li>● <b>BTA</b> = Business error by Tax Authorities</li></ul>
errorCode	String	In case invoice upload fails, error code indicates the type of the error.
errorMessage	String	Detailed description of the error.

Request Example	
<b>POST</b>	<b>api/pointOfService/ListDetails</b>
Host	Use the <b>url1</b> returned from the <b>/api/account/loginToSubscription</b> endpoint.
HTTP Header	Key: <b>X-Version</b> Value: <b>3.0 *required</b>
<pre>{   "companyBranchCode": "0",   "refNumber": 0,   "pointOfService": "T139",   "filter": 0 }</pre>	
Response Example	
<pre>{   "data": [     {       "details": [         {           "externalSystemId": "b4d6749a-f81e-4508-9935-29c5aea42bde",           "mark": 400001950545970,           "invoiceType": "8.6",           "totalAmount": 16.78,           "transactionAmount": 16.78,           "invoiceCode": "ΔΠ-0001 393",           "orderFormStatus": 0         }       ],       "pointOfService": "T139",       "balance": 16.78,       "refNumber": 185     }   ],   "success": true,   "errorCategory": null,   "errorCode": null,   "errorMessage": null }</pre>	
Status	
<b>200 OK</b>	
<b>401</b>	Unauthorized request. The JWT is either invalid or expired

## Order Forms

Document type 8.6 Order Form is a non-value document intended for restaurant service businesses and its connection with Accounting Records is mandatory.

### Connect Documents

For cases where the Order Form and Accounting Document are not connected in transmission, the ConnectDocuments functionality allows for delayed connection.

Request	
<b>POST</b>	<b>api/OrderForms/ConnectDocuments</b>
Host	Use the <b>url1</b> returned from the <b>/api/account/loginToSubscription</b> endpoint.
HTTP Header	Key: <b>X-Version</b> Value: <b>3.0 *required</b>

Parameter	Values	Description
processId [optional]	Guid	The unique processId returned by <b>api/send</b> .
externalSystemId [optional]	String	The external identifier provided as input to <b>api/send</b> method for order form.
documentMarks	list	List (string) of Accounting Documents' marks.
<b>At least one of the above should be defined</b>		

Response			
Status	Response	Values	Description
<b>200</b>	connectedCount	Int	Count of connected Accounting Documents.
	status	Number	The progress status of the procedure. <b>Completed = 1, Failed = 2.</b>
	errorCategory	String	Indicates the category of the error. <b>TED</b> = Technical error by Parochos <b>BED</b> = Business error by Parochos <b>TTA</b> = Technical error by Tax Authorities <b>BTA</b> = Business error by Tax Authorities
	errorCode	String	In case invoice upload fails, errorCode indicates the type of the error.
	errorMessage	String	Detailed description of the error.
<b>401</b>			Unauthorized request. The jwt is either invalid or expired.

## RepublishB2G

The Parochos API offers a method where the user can automatically correct B2G invoices that have been marked with SOFT REJECT message from the public authority.

Request	
<b>POST</b>	<b>api/RepublishB2G</b>
Host	Use the <b>url1</b> returned from the <b>/api/account/loginToSubscription</b> endpoint.
HTTP Header	Key: <b>X-Version</b> Value: <b>3.0 *required</b>

Field	Root	Type	Description
processId	1	Guid	The unique processId returned by <b>api/send</b> .
externalSystemId	1	String	The external identifier provided as input to <b>api/send</b> method for order form.
publishDetails	2	Object	Additional Information for B2B and B2G publishing
PublishDetails.contractAuthorityID	3		Public Authority Identifier (Required only for B2G)
PublishDetails.budget	3	Object	
budget.type	4		Type of the budget (Regular Budget = 1, e PDE = 2 , Other Budget = 3) (Required only for B2G)
budget.identifier	4		Identifier number of the budget (Required only for B2G)
budget.contractIdentifier	4		The Identifier of the contract with the public Institution (Required only for B2G)
budget.organizationalUnitName	4		Name of internal organizational unit of public authority that will receive the invoice, if any.
budget.organizationalUnitCode	4		Code of internal organizational unit of public authority that

			will receive the invoice, if any.
budget.purchaseOrderReference	4		An identifier of a referenced purchase order, issued by the Buyer. An invoice must have buyer reference (BT-10) or purchase order reference. In cases where sales order reference is provided, but there's no purchase order reference, then use valu

Response	Status	Response	Values	Description
200		message	String	
		status	Number	The progress status of the procedure. <b>Completed = 1, Failed = 2.</b>
		errorCategory	String	Indicates the category of the error. <b>TED</b> = Technical error by Parochos <b>BED</b> = Business error by Parochos <b>TTA</b> = Technical error by Tax Authorities <b>BTA</b> = Business error by Tax Authorities
		errorCode	String	In case invoice upload fails, errorCode indicates the type of the error.
		errorMessage	String	Detailed description of the error.
401				Unauthorized request. The jwt is either invalid or expired.

---

## Invoice Source Data analysis

The source argument in API call requests specifies the content data of the invoice that will be transmitted to the Tax Authorities. It should include all information required by both the Tax Authorities and e-Invoicing for PEPPOL BIS Billing 3.0 (sequence UBL 2.1). The basic elements of the invoice are detailed in the following sections.

- Invoice issuer
- Invoice counterpart
- Invoice representative, when applicable
- Shipment Address, when applicable
- Basic Invoice Information
- Invoice Lines
- Payment Terms
- Correlated Invoices, when applicable
- Invoice Totals

Tax Authorities' and UBL2.1 also require specific elements to be configured according to given code lists ([Tax Authorities Code lists](#) & [PEPPOL BIS Billing 3.0](#)).

The code lists can be configured either on the external system (e.g. EPR) or at Parochos Platform and resolved based on Invoice's details and are listed below.

- Country [ISO 3166-1 alpha-2](#)
- Currency [ISO 4217](#)
- Invoice Type
- VAT category
- VAT Exemption category
- Measurement Units
- Allowances / Charges Categories
- Move Purposes
- Payment Term Codes
- Classification Categories
- Classification Types
- VAT Classification Types

The source should also include two additional elements to handle specific conditions of invoice transmission:

- Invoice Transmission to the end customer
- Invoice Delayed Transmission in case of connectivity issues

# Tax Authorities & UBL2.1 configured in External System

If the integrated external system (e.g. ERP) has embedded configuration for the information required by the Tax Authorities, this information can be directly transmitted into the source invoice data structure without any further configuration on the Parochos Platform.

A sample source invoice data structure for this intent is described below.

Field	Level	Mandatory	Type	UBL	Description
invoice	root	YES	Object		Invoice to be transmitted to Tax Authorities' platform
<b>invoice.issuer</b>	1	YES	Object	BG-4	Issuer's information
issuer.vatNumber	2	YES	String	BT-31	Issuer's TIN
issuer.branch	2	NO	Int		Issuer's Company Branch N/A as registered in Tax Authorities' platform
issuer.name	2	NO	String	BT-27	Note: For Greek entities (GR), Name and Address are generally not sent.
<b>issuer.country</b>	2	NO	String	BT-40	2-character ISO 3166 Country Code (e.g., GR).
<b>issuer.street</b>	2	NO	String	BT-35	Issuer's address street
<b>issuer.streetNumber</b>	2	NO	String	BT-35	Issuer's address street number
<b>issuer.postalCode</b>	2	NO	String	BT-38	Issuer's postal code
<b>issuer.city</b>	2	NO	String	BT-37	Issuer's city
<b>issuer.contact</b>	2	NO	Object	BG-6	A group of business terms providing contact information about the Seller
contact.contactName	3	NO	String	BT-41	Seller contact point. A contact point for a legal entity or person
contact.telephone	3	NO	String	BT-42	Seller contact telephone number. A phone number for the contact point
contact.email	3	NO	String	BT-43	Seller contact email address. An e-mail address for the contact point
<b>invoice.counterpart</b>	1	YES	Object	BG-7	Counterpart's information
counterpart.vatNumber	2	YES	String	BT-1 BT-48	Counterpart's TIN
counterpart.branch	2	NO	Int	BT-1	Counterpart's Company Branch N/A as registered in Tax Authorities' platform
counterpart.name	2	YES	String	BT-44	Counterpart's Company Official Title
counterpart.supplyAccountNo	2	NO	String		Electricity Supply Number. (Only for fuel invoices)
counterpart.countryDocumentId	2	NO	String		Issuing country code of official document. <a href="#">ISO 3166. Official ISO website</a>
counterpart.documentIdNo	2	NO	String		Official document number. Only for Tax Free documents. (specialInvoiceCategory = 4)
counterpart.email	2	NO	String	BT-49	Counterpart's Company contact email
counterpart.country	3	NO	String	BT-55	Counterpart's country. <a href="#">ISO 3166-1 alpha-2</a>
counterpart.city	3	NO	String	BT-52	Counterpart's city
counterpart.street	3	NO	String	BT-50	Counterpart's address street
counterpart.streetNumber	3	NO	String	BT-50	Counterpart's address street number
counterpart.postalCode	3	NO	String	BT-53	Counterpart's address postal code
invoice.printProfileId	1	NO	String		
invoice.printProfileCode	1	NO	String		
<b>invoice.representative</b>	1	NO	Object	BG-11	
representative.vatNumber	2	NO	String	BT-1 BT-63	Representative's TIN

representative.name	2	NO	String	BT-62	Representative's Title
<b>representative.address</b>	2	NO	Object	BG-12	
address.country	3	YES	String	BT-69	Representative's Country
<b>invoice.deliveryAddress</b>	1	NO	Object		Shipping address details for B2G / UBL
deliveryAddress.country	2	NO	String	BT-80	Shipping country ISO 3166-1 alpha-2
deliveryAddress.city	2	NO	String	BT-77	Shipping address city
deliveryAddress.street	2	NO	Int	BT-75	Shipping address street
deliveryAddress.streetNumber	2	NO	String	BT-75	Shipping address street number
deliveryAddress.postalCode	2	NO	String	BT-78	Shipping address postal code
deliveryAddress.partyName	2	NO	String	BT-70	The name of the party to which the goods and services are delivered. Required only for B2G Transmission.
deliveryAddress.deliveryLocationIdentifier	2	NO	String	BT-71	Identifier for the location at which the goods and services are delivered
deliveryAddress.deliveryLocationSchema	2	NO	String	BT-71	Identification scheme of the deliverLocationIdentifier.
<b>invoice.invoiceHeader</b>	1	YES	Object		Header of the invoice
invoiceHeader.series	2	YES	String		Series Code of Invoice issued.
invoiceHeader.aa	2	YES	Long	BT-1	Invoice Number
invoiceHeader.issueDate	2	YES	Date	BT-1 BT-2	Invoice Date <a href="#">ISO 8601</a> . You should also include the time that the invoice was issued since it is legally required. Example: 2026-05-04T16:07:02Z
invoiceHeader.dueDate	2	NO	String	BT-9	Payment Due Date <a href="#">ISO 8601</a> . In case the Amount due for payment is positive, either the Payment due date (BT-9) or Payment terms (BT-20) shall be present.
invoiceHeader.paymentTerms	2	NO	String	BT-20	A textual description of the payment terms that apply to the amount due for payment (Including description of possible penalties). In case the Amount due for payment is positive, either the Payment due date (BT-9) or the Payment terms (BT-20) shall be present.
invoiceHeader.vatPaymentSuspension	2	NO	Bool		Values 0 / 1
invoiceHeader.dispatchDate	2	NO	Date		Dispatch Date <a href="#">ISO 8601</a>
invoiceHeader.invoiceNote	2	NO	String	BT-22	Invoice note/comment as free text
invoiceHeader.invoiceCode	2	NO	String		Invoice Code
invoiceHeader.documentId	2	NO	String		
invoiceHeader.invoiceType	2	YES	String	BT-1	Invoice Type according to Tax Authorities' documentation
invoiceHeader.specialInvoiceCategory	2	NO	String		
invoiceHeader.invoiceTypeUbl	2	YES	String	BT-3	Invoice Type according to UBL 2.1 documentation
invoiceHeader.currency	2	YES	String	BT-5	Currency of Invoice <a href="#">ISO 4217</a>
invoiceHeader.tenderOrLotReference	2	NO	String	BT-17	Identification of the call for tender or lot the invoice relates to
invoiceHeader.buyerAccountingReference	2	NO	String	BT-19	A textual value that specifies where to book the relevant data into the Buyer's financial accounts.
invoiceHeader.selfPricing	2	NO	Boolean		Indicates whether the invoice is self-pricing. Default is false
invoiceHeader.movePurpose	2	NO	Int		Move purpose according to Tax Authorities' documentation

invoiceHeader.OtherMovePurpose Title	2	NO	String		The other move purpose title. (Only for invoice type 9.3 or IsDeliveryNote = 1 and movePurpose = 19).
invoiceHeader.fuelInvoice	2	NO	Boolean		Indicates whether the invoice is related to the fuel industry. Default is false
invoiceHeader.OpenPointOfService	2	NO	Int		Opening Point of Service. 0 = None, 1 = Open. (Required only for order forms)
invoiceHeader.ClosePointOfService	2	NO	Int		Closing Point of Service. 0 = None, 1 = Closing. (Required only for order forms)
invoiceHeader.PointOfService	2	NO	String		Point of service name. (Required only for order forms)
invoiceHeader.despatchDocument Reference	2	NO	String	BT-16 BT-122 BT-123	Despatch advice reference. An identifier of a referenced despatch advice. Multiple despatch advice references may be defined in correlatedInvoices and the corresponding BT-122 and BT-123 fields will be populated.
invoiceHeader.actualDeliveryDate	2	NO	Date	BT-72	The date on which the supply of goods or services was made or completed. Format = "YYYY-MM-DD"
invoiceHeader.isDeliveryNote	2	NO	Boolean		Indicates whether the invoice is consignment form. Default is false.
invoiceHeader.thirdPartyCollection	2	NO	Boolean		Indicates whether the invoice is recovery of third-parties (Acceptable only for invoice type 8.4 or 8.5). Default is false.
invoiceHeader.exchangeRate	2	NO	Decimal		Enter the exchange rate between euro and currency. Only if the currency is not euro. Min value = 0, decimal digits = 5.
invoiceHeader.vehicleNumber	2	NO	String		Number of vehicles used to deliver the consignment. Applicable only for invoice type 9.3 or for invoices with isDeliveryNote = 1.
invoiceHeader.reverseDeliveryNote	2	NO	Boolean		Reverse delivery note indicator. Applicable only for invoice type 9.3.
invoiceHeader.reverseDeliveryNotePurpose	2	NO	String		Purpose of the reverse delivery note. Applicable only for invoice type 9.3 when reverseDeliveryNote is set to true. Min value=1, Max value=5
invoiceHeader.toWeigh	2	NO	String		
invoiceHeader.CancelConnected	2	NO	Boolean		To refund all Order Tickets (8.6) <ul style="list-style-type: none"> <li>• True = 1</li> <li>• False = 0</li> </ul> Seeing an example in <a href="#">Hospitality</a>
<b>invoiceHeader.otherDeliveryNoteHeader</b>	2	NO	Object		Address of the consignment form
<b>otherDeliveryNoteHeader.loadingAddress</b>	3	NO	Object		Loading address of consignment form.
loadingAddress.street	4	NO	String		Loading street.
loadingAddress.number	4	NO	String		Loading street number.
loadingAddress.postalCode	4	NO	String		Loading postal code (For invoice type 9.3 or isDeliveryNote = 1 is mandatory).
loadingAddress.city	4	NO	String		Loading city (For invoice type 9.3 or isDeliveryNote = 1 is mandatory).
<b>otherDeliveryNoteHeader.deliveryAddress</b>	3	NO	Object		Delivery address of consignment form.
deliveryAddress.street	4	NO	String		Delivery street.
deliveryAddress.number	4	NO	String		Street delivery number.
deliveryAddress.postalCode	4	NO	String		Delivery postal code (For invoice type 9.3 or isDeliveryNote = 1 is mandatory).

deliveryAddress.city	4	NO	String		Delivery city (For invoice type 9.3 or isDeliveryNote = 1 is mandatory).
otherDeliveryNoteHeader.startShippingBranch	3	NO	Int		Dispatch initiation branch
otherDeliveryNoteHeader.completionShippingBranch	3	NO	Int		Shipping completion branch.
invoice.otherCorrelatedEntities	1	NO	Object		
otherCorrelatedEntities.type	2	NO	Int		
otherCorrelatedEntities.entityData	2	NO	Object		
entityData.vatNumber	3	NO	String		
entityData.branch	3	NO	Int		
entityData.name	3	NO	String		
entityData.documentIdNo	3	NO	String		
entityData.countryDocumentId	3	NO	String		
entityData.supplyAccountNo	3	NO	String		
entityData.address	3	NO	Object		
address.country	4	NO	String		
address.street	4	NO	String		
address.number	4	NO	String		
address.postalCode	4	NO	String		
address.city	4	NO	String		
invoice.invoiceDetails	1	YES	Object	BG-25	Lines of the invoice
invoiceDetails.incomeClassification	2	NO	Object		
incomeClassification.classificationType	3	NO	String		
incomeClassification.classificationCategory	3	NO	String		
incomeClassification.amount	3	NO	Int		
incomeClassification.vatAmount	3	NO	Int		
incomeClassification.vatCategory	3	NO	Int		
incomeClassification.vatExemptionCategory	3	NO	String		
invoiceDetails.expensesClassification	2	NO	Object		
expensesClassification.classificationType	3	NO	String		
expensesClassification.classificationCategory	3	NO	String		
expensesClassification.amount	3	NO	Int		
expensesClassification.vatAmount	3	NO	Int		
expensesClassification.vatCategory	3	NO	Int		
expensesClassification.vatExemptionCategory	3	NO	String		
invoiceDetails.lineNumber	2	NO	Int	BT-126	Invoice Line N/A
invoiceDetails.itemDescr	2	NO	String	BT-153	
invoiceDetails.recType	2	NO	Int		Line type according to Tax Authorities' documentation
invoiceDetails.quantity	2	YES	Decimal	BT-129	Line quantity
invoiceDetails.quantity15	2	NO	Decimal		Used only for Fuel Invoices and represents fuel quantity in 15°C

invoiceDetails.entityName	2	YES	String	BT-153	Item's Description
invoiceDetails.invoiceDetailType	2	NO	Int		Invoice Detail Type when necessary, according to Tax Authorities' documentation (Ex. invoice type 1.5)
invoiceDetails.fuelCode	2	NO	Int		Fuel Code according to Tax Authorities' documentation.
invoiceDetails.netValue	2	YES	Decimal	BT-131	Line net amount
invoiceDetails.totalValue	2	NO	Decimal		Line total amount
invoiceDetails.vatCategory	2	YES	Int	BT-151	Vat Category according to Tax Authorities' documentation
invoiceDetails.vatCategoryUbl	2	NO	String	BT-118	Vat Category according to UBL 2.1 documentation
invoiceDetails.vatExemption	2	NO	Int		Vat exemption category according to Tax Authorities' documentation
invoiceDetails.vatExemptionUbl	2	NO	String	BT-121	Vat Exemption category according to UBL 2.1 documentation
invoiceDetails.vatAmount	2	YES	Decimal	BT-110	VAT amount
invoiceDetails.vatPercent	2	YES	Decimal	BT-119	VAT percent
invoiceDetails.measurementUnit	2	YES	Int		Measurement Unit according to Tax Authorities' documentation
invoiceDetails.measurementUnitUbl	2	YES	String	BT-130	Measurement Unit according to UBL 2.1 documentation
invoiceDetails.lineComments	2	NO	String	BT-127	Comments of line
invoiceDetails.classificationCategory	2	NO	String		Classification category according to Tax Authorities' documentation (Parochos automatically resolves whether it represents income or expense classification)
invoiceDetails.classificationType	2	NO	String		Classification type according to Tax Authorities' documentation (Parochos automatically resolves whether it represents income or expense classification)
invoiceDetails.classificationVatType	2	NO	String		VAT classification type of in case of expense classification according to Tax Authorities' documentation
invoiceDetails.discountOption	2	NO	Boolean		Right to discount. 0 = False, 1 = True.
invoiceDetails.discountAmount	2	NO	Decimal		Enter the discount amount.
invoiceDetails.cpvCode	2	NO	String		Classification code for public procurement. Required only for B2G Transmission. (publishType = 2)
invoiceDetails.taricNo	2	NO	String		Taric code, integrated Tariff of the European Communities. (Only for invoice type 9.3 or IsDeliveryNote = 1)
invoiceDetails.itemCode	2	NO	String		Item code. (Only for invoice type 9.3 or IsDeliveryNote = 1 or B2G transmission)
invoiceDetails.movePurposeLine	2	NO	String		
invoiceDetails.otherMovePurposeLineTitle	2	NO	String		
invoiceDetails.ublAllowanceInTotals	2	NO	Boolean		Applicable only for B2G. Flag indicating whether the allowance specified in line should be included in invoice totals or if it should be included in the B2G invoice only as informative text (BG-24). Default value "false".
invoiceDetails.notVAT195	2	NO	Boolean		

<b>invoiceDetails.taxInfo</b>	2	<b>NO</b>	Object		Charge/allowance applied on line level or charge with VAT in correspondence with "recType".
taxInfo.taxCategory	3	<b>NO</b>	Int		Charge/allowance category according to Tax Authorities' documentation
taxInfo.taxCategoryUbl	3	<b>NO</b>	String		Charge/allowance category according to UBL 2.1 documentation
taxInfo.underlyingValue	3	<b>NO</b>	Decimal		Total amount subject to a specific charge/allowance category
taxInfo.taxPercent	3	<b>NO</b>	Decimal		Charge/allowance percentage applied
<b>invoiceDetails.itemProperties</b>	2	<b>NO</b>	List	BG-2	A group of business terms providing information about properties of the goods and services invoiced.
name	3	<b>YES</b>	String	BT-160	Item attribute name
value	3	<b>YES</b>	String	BT-161	Item attribute value
<b>invoice.paymentMethods</b>	1	<b>YES</b>	List		
paymentMethods.type	2	<b>YES</b>	Int		Payment method code according to Tax Authorities' documentation
paymentMethods.amount	2	<b>YES</b>	Decimal		Portion of net amount
paymentMethods.justification	2				
paymentMethods.externalPaymentId	2	<b>NO</b>	String		Only for request without using externalSystemId. The external payment identifier specified in the api/requestPayment method.
paymentMethods.signature	2	<b>NO</b>	String		Parochos Provider payment signature returned by RequestPayment method. Required only for payment method type EFT-POS (type=7)
paymentMethods.transactionId	2	<b>NO</b>	String		Bank transaction identifier returned by the POS terminal. Required only for payment method type EFT-POS (type=7)
paymentMethods.tipAmount	2	<b>NO</b>	Decimal		Tip amount paid alongside the payable amount. Required only for payment method type EFT-POS (type=7) when a tip amount is returned by the POS terminal.
paymentMethods.terminalId	2	<b>NO</b>	String		The Id of the EFT-POS terminal that will perform the payment transaction.
paymentMethods.nspCode	2	<b>NO</b>	String		Code identifier of the EFT-POS service provider. See <a href="#">Appendix 5</a>
<b>invoice.taxesTotals</b>	1	<b>NO</b>	List		Fees and additional charges or allowances details, when additional charges are included
taxesTotals.taxType	2	<b>NO</b>	Int		Type of the charge/allowance according to Tax Authorities' documentation
taxesTotals.taxCategory	2	<b>NO</b>	Int		Charge/allowance category according to Tax Authorities' documentation
taxesTotals.taxCategoryUbl	2	<b>NO</b>	String	BT-98 BT-105	Charge/allowance category according to UBL 2.1 documentation
taxesTotals.underlyingValue	2	<b>NO</b>	Decimal	BT-93 BT-100	Total amount subject to a specific charge/allowance category
taxesTotals.taxAmount	2	<b>NO</b>	Decimal	BT-92 BT-99	Charge/allowance amount
taxesTotals.taxPercent	2	<b>NO</b>	Decimal	BT-94 BT-101	Charge/allowance percentage applied
taxesTotals.ublAllowanceInTotals	2	<b>NO</b>	Boolean		Applicable only for B2G. Flag indicating whether the allowance specified in taxesTotals should be included in invoice totals or if it should be included in the B2G invoice only as informative text (BG-24). Default value "false".

<b>invoice.correlatedInvoices</b>	1	<b>NO</b>	List		Specific Invoice Types needs correlation between the invoice issued and a previously issued related invoice, e.g. sales invoice-credit invoice
correlatedInvoices.externalSystemId	2	<b>NO</b>	String		Original Invoice id as defined in your ERP System
correlatedInvoices.mark	2	<b>YES</b>	Long		Original Invoice transmission M.AR.K
correlatedInvoices.invoiceType	2				
<b>invoice.publishType</b>	1	<b>NO</b>	Int		Type of Electronic Invoice Transmission None = 0 B2B = 1 B2G = 2
<b>invoice.publishDetails</b>	1	<b>NO</b>	Object		Additional Information for B2B and B2G publishing
publishDetails.contractingAuthorityID	2	<b>NO</b>	String	BT-46	Public Authority Identifier (Required only for B2G)
publishDetails.contractIdentifier	2	<b>NO</b>	String	BT-12	The Identifier of the contract with the public Institution (Required only for B2G)
publishDetails.organizationalUnitName	2	<b>NO</b>	String	BT-10	Name of internal organizational unit of public authority that will receive the invoice, if any.
publishDetails.organizationalUnitCode	2	<b>NO</b>	String	BT-10	Code of internal organizational unit of public authority that will receive the invoice, if any.
publishDetails.budget	2	<b>NO</b>	Object		
budget.type	3	<b>NO</b>	Int	BT-11	Type of the budget (Regular Budget = 1, e-PDE = 2, Other Budget = 3) (Required only for B2G)
budget.identifier	3	<b>NO</b>	String		Identifier number of the budget (Required only for B2G)
publishDetails.purchaseOrderReference	2	<b>NO</b>	String	BT-13	An identifier of a referenced purchase order, issued by the Buyer. An invoice must have buyer reference (BT-10) or purchase order reference. In cases where sales order reference is provided, but there's no purchase order reference, then use value "NA" as this element is mandatory in UBL.
<b>invoice.packingsDeclarations</b>	1	<b>NO</b>	List		Declarations of Packaging for distribution.
packingsDeclarations.packagingType	2	<b>YES</b>	Int		Type of Packaging.
packingsDeclarations.quantity	2	<b>YES</b>	Int		Quantity of packaging.
packingsDeclarations.otherPackagingTypeTitle	2	<b>NO</b>	string		Title for Other Types of Packaging (max length = 150).
<b>invoice.Messages</b>	1	<b>NO</b>	Object		Recipients' information & type of message template
Messages.type	2	<b>YES</b>	Int		Type of message to be sent Email = 0 SMS = 1
Messages.recipients	2	<b>YES</b>	String		Email or mobile number of the recipients separated by “;”
Messages.cc	2	<b>NO</b>	String		Cc emails separated by “;”
Messages.templateIdentifier	2	<b>NO</b>	String		Identifier of message template, when not included the default message template is applied.
invoice.delayedProcessCode	1	<b>NO</b>	String		In case of real time transmission failure, authenticated code ( <b>externalSystemId</b> )

					must be included, as it was provided at issue to Parochos Platform.
invoice.delayedProcessKind	1	NO	String		For certain companies that are allowed to send an invoice after the 24 hour period.
invoice.payee	1	NO	Object	BG-10	A group of business terms providing information about the Payee, i.e. the role that receives the payment. Shall be used when the Payee is different from the Seller.
payee.name	2	NO	String	BT-59	The name of the Payee
payee.id	2	NO	String	BT-60	Payee identifier or bank assigned creditor identifier This element is used for both the identification of the Payee, or the unique banking reference identifier of Payee (assigned by the Payee bank.) For payee identification use ICD code list, for SEPA bank assigned creditor reference, use SEPA
payee.companyId	2	NO	String	BT-61	Payee legal registration identifier An identifier issued by an official registrar that identifies the Payee as a legal entity or person
invoice.invoicePeriod	1	NO	Object	BG-14	A group of business terms providing information on the invoice period. Also called delivery period. If the group is used, the invoicing period start date and/or end date must be used.
invoicePeriod.startDate	2	YES	Date	BT-73	Invoicing periods start date
invoicePeriod.endDate	2	YES	Date	BT-74	Invoicing period end date
<b>invoice.invoiceSummary</b>	1	YES			
invoiceSummary.totalNetValue	2	NO	Decimal	BT-106	Total net amount of the invoice
invoiceSummary.totalVatAmount	2	NO	Decimal	BT-110	Total VAT amount of the invoice
invoiceSummary.totalValue	2	YES	Decimal	BT-112	Invoice's Payable Amount

## Tax Authorities & UBL2.1 configured in Parochos

If the integrated external system (e.g., ERP) does not recognize Tax Authorities' code lists, the source invoice data structure should include the necessary native values. This ensures that the mapping configuration to the corresponding Tax Authorities' structures can be effectively performed on the Parochos Platform, without needing to include UBL fields.

## Invoice Transmission to end customer

Parochos provides a service for sending personalized invoice information and signed invoice files to a list of end customers via email and SMS.

The messages can be defined in two ways:

1. **Parochos UI Configuration:** Recipients can be configured through the "Contacts" page and automatically recognized by their Tax Identification Number. Multiple message templates can be assigned to each contact (recipient).
2. **API Call:** Invoice recipients can be identified during transmission via an API call. The "messages" entity should be included in the "source" argument as described above.

---

Example of using "Messages":

```
"Messages": [  
  {  
    "type": 0,  
    "recipients": " recipient1@email.com; recipient2@email.com",  
    "cc": " recipient3@email.com; recipient4@email.com",  
    "templateIdentifier": "000001"  
  },  
  {  
    "type": 1,  
    "recipients": "6971234567;6974562310",  
    "templateIdentifier": "000001"  
  }  
]
```

Please note that recipients specified via API override any Parochos configuration. Both methods require message templates to be set through the Parochos UI configuration for each sending mode. Additionally, the invoiced status must be finalized.

---

## Invoice Delayed Transmission

Every invoice issued should be transmitted to Tax Authorities in real time. In case of connectivity failure, different steps should be followed depending on the source of the problem and the chosen implementation approach.

### Invoice File Generated by the External System

- **Internet Failure:** The invoice can be issued offline after receiving approval via the Parochos mobile application. Once the issue is resolved, the invoice must be transmitted to Parochos, and the source data structure should include the approved code in the `delayedProcessCode` attribute.
- **Transmission to Tax Authorities Failure:** The transmission's polling process will return specific error codes indicating the source of the problem. The invoice can be issued offline after receiving approval via the Parochos mobile application. Once the issue is resolved, the invoice must be re-transmitted to Parochos, and the source data structure should include the approved code in the `delayedProcessCode` attribute.

### Invoice File Generated by Parochos

- **Internet Failure:** The invoice can be issued offline after receiving approval via the Parochos mobile application. Once the issue is resolved, the invoice must be transmitted to Parochos, and the source data structure should include the approved code in the `delayedProcessCode` attribute.
- **Transmission to Tax Authorities Failure:** The transmission's polling process will return specific error codes indicating the source of the problem. According to the issuer's configuration on the Parochos Platform, the process will either automatically stop or proceed without signing. In the latter case, once the issue is resolved, the invoice will automatically be re-transmitted by Parochos to the Tax Authorities with the corresponding indication.

---

## Invoice\_structure.json

```
{
  "externalSystemId": "string",
  "identifier": "parochos",
  "transmissionType": 5,
  "source": {
    "invoice": {
      "issuer": {
        "vatNumber": "000000000",
        "name": "string",
        "branch": 0,
        "country": "GR",
        "street": "street",
        "streetNumber": "streetNumber",
        "postalCode": "postalCode",
        "city": "city",
        "contact": {
          "contactName": "string",
          "telephone": "string",
          "email": "string"
        }
      }
    },
    "counterpart": {
      "vatNumber": "string",
      "branch": 0,
      "name": "string",
      "country": "GR",
      "street": "street",
      "streetNumber": "streetNumber",
      "postalCode": "postalCode",
      "city": "city",
      "documentIdNo": "string",
      "supplyAccountNo": "string",
      "countryDocumentId": "string",
      "email": "string"
    },
    "printProfileId": "string",
    "printProfileCode": "string",
    "representative": {
      "vatNumber": "string",
      "name": "string",
      "address": {
        "country": "string"
      }
    }
  },
  "deliveryAddress": {
    "country": "string",
    "city": "string",
```

```
"street": "string",
"streetNumber": "string",
"postalCode": "string",
"partyName": "string"
},
"Messages": [
  {
    "type": 0,
    "recipients": "string",
    "cc": "string",
    "templateIdentifier": "string"
  }
],
"delayedProcessCode": "string",
"delayedProcessKind": "string",
"publishType": "",
"publishDetails": {
  "contractingAuthorityID": "string",
  "budget": {
    "type": "string",
    "identifier": "string"
  },
  "contractIdentifier": "string",
  "organizationalUnitName": "string",
  "organizationalUnitCode": "string",
  "purchaseOrderReference": "string"
},
"paymentMethods": [
  {
    "type": 0,
    "amount": 0,
    "tipAmount": 0,
    "terminalId": "string",
    "transactionId": "string",
    "nspCode": "string",
    "signature": "string",
    "justification": "string"
  }
],
"packingsDeclarations": [
  {
    "packagingType": 0,
    "quantity": 0,
    "otherPackagingTypeTitle": "string"
  }
],
"correlatedInvoices": [
  {
    "mark": 400001958730524,
    "externalSystemId": "string",
```

```
    "invoiceType": "string"
  }
],
"invoiceHeader": {
  "series": "string",
  "aa": "string",
  "issueDate": "2026-01-29T09:02:34.466Z",
  "dispatchDate": "2026-01-29T09:02:34.466Z",
  "dueDate": "2026-01-29",
  "paymentTerms": "string",
  "invoiceNote": "string",
  "invoiceCode": "string",
  "endToEndReferenceld": "string",
  "documentId": "string",
  "invoiceType": "string",
  "specialInvoiceCategory": 0,
  "invoiceTypeUbl": "string",
  "currency": "string",
  "exchangeRate": 0,
  "OpenPointOfService": 1,
  "ClosePointOfService": 1,
  "CancelConnected": 0,
  "PointOfService": "string",
  "selfPricing": "true",
  "movePurpose": "string",
  "otherMovePurposeTitle": "string",
  "fuelInvoice": true,
  "vatPaymentSuspension": true,
  "vehicleNumber": "string",
  "reverseDeliveryNote": true,
  "reverseDeliveryNotePurpose": true,
  "toWeigh": "",
  "isDeliveryNote": 1,
  "thirdPartyCollection": 1,
  "otherDeliveryNoteHeader": {
    "loadingAddress": {
      "street": "string",
      "number": "string",
      "postalCode": "string",
      "city": "string"
    },
    "deliveryAddress": {
      "street": "string",
      "number": "string",
      "postalCode": "string",
      "city": "string"
    },
    "startShippingBranch": 0,
    "completeShippingBranch": 0
  },
}
```

```

"otherCorrelatedEntities": [
  {
    "type": 0,
    "entityData": {
      "vatNumber": "string",
      "branch": 0,
      "name": "string",
      "documentIdNo": "string",
      "countryDocumentId": "string",
      "supplyAccountNo": "string",
      "address": {
        "country": "string",
        "street": "string",
        "number": "string",
        "postalCode": "string",
        "city": "string"
      }
    }
  }
],
"invoiceDetails": [
  {
    "incomeClassification": [
      {
        "classificationType": "string",
        "classificationCategory": "string",
        "amount": 0,
        "vatAmount": 0,
        "vatCategory": 0,
        "vatExemptionCategory": "string"
      }
    ],
    "expensesClassification": [
      {
        "classificationType": "string",
        "classificationCategory": "string",
        "amount": 0,
        "vatAmount": 0,
        "vatCategory": 0,
        "vatExemptionCategory": "string"
      }
    ],
    "lineNumber": 0,
    "itemDescr": "string",
    "recType": 0,
    "quantity": 0,
    "entityName": "string",
    "invoiceDetailType": 0,
    "netValue": 0,

```

```

    "totalValue": 0,
    "discountAmount": 0,
    "discountOption": true,
    "vatPercent": 0,
    "vatAmount": 0,
    "vatCategory": 0,
    "vatCategoryUbl": "string",
    "vatExemption": "string",
    "vatExemptionUbl": "string",
    "measurementUnit": 0,
    "measurementUnitUbl": "string",
    "otherMeasurementUnitQuantity": 0,
    "otherMeasurementUnitTitle": "string",
    "lineComments": "string",
    "fuelCode": 0,
    "classificationCategory": "string",
    "classificationType": "string",
    "classificationVatType": "string",
    "cpvCode": "string",
    "taricNo": "string",
    "itemCode": "string",
    "notVAT195": true,
    "ublAllowanceInTotals": true,
    "movePurposeLine": "",
    "otherMovePurposeLineTitle": "",
    "quantity15": "",
    "taxInfo": {
      "taxCategory": "",
      "taxCategoryUbl": "",
      "underlyingValue": "",
      "taxPercent": ""
    }
  },
  "taxesTotals": [
    {
      "taxType": 0,
      "taxCategory": 0,
      "taxCategoryUbl": "string",
      "underlyingValue": 0,
      "taxAmount": 0,
      "taxPercent": 0,
      "ublAllowanceInTotals": true
    }
  ],
  "invoiceSummary": {
    "totalNetValue": 0,
    "totalVatAmount": 0,
    "totalValue": 0
  }
}

```

```
}  
}  
}
```

## Appendix 1

### Parochos Development Environment Endpoints

Description	URL
Base URL	<a href="#">Account</a>
Account API Calls	<a href="#">Account Swagger</a>
Parochos API Calls	url1/swagger url1 is return by: <a href="https://beta-account.parochos.gr/api/account/loginToSubscription">https://beta-account.parochos.gr/api/account/loginToSubscription</a>

### Parochos Production Environment Endpoints

Description	URL
Base URL	<a href="#">Account</a>
Account API Calls	<a href="#">Account Swagger</a>
Parochos API Calls	url1/swagger url1 is return by: <a href="https://account.parochos.gr/api/account/loginToSubscription">https://account.parochos.gr/api/account/loginToSubscription</a>

## Appendix 2

### Conventions

- **Client:** Client application.
- **Status:** HTTP status code of the response.
- **Responses:** All possible responses are listed under 'Responses' for each method. Only one response is issued per request server.
- **Format:** All responses are in JSON format.
- **Parameters:** All request parameters are mandatory unless explicitly marked as [optional].

## Parochos Operational Error Codes

Operational errors occur when a procedure does not execute as expected and fails. Data validation and connectivity issues could cause an operation to fail. In these cases, the call is considered technically successful, and the HTTP response status is 200 (OK).

The response of the API call contains the `errorCode`, `errorCategory`, `errorMessage`, and `errorSeverity`, which describe the cause of the failure.

Error Code	Error Category	Method	Description
00010003	Technical ED	All	Subscription information is not valid
00080002	Business ED	All	ProcessId or ExternalSystemId is required
00080003	Business ED	All	The input provided does not correspond to a system registration
00010002	Business ED	All	Input data is not valid
00010004	Business ED	Get	Failure while retrieving invoice information
00010005	Business ED	Get	Invoice not available.
00010011	Business ED	Send	Invoice creation failed
00010014	Business ED	Get	Errors while processing invoice source data
00010015	Business ED	Get	Errors while validating invoice source data
00010020	Business ED	Get	Errors while mapping invoice source data to Parochos templates
00010021	Business ED	Get	UBL error: The sum of the amounts does not match the Document Total.
00010022	Business ED	Get	Invoice with the same invoice code already submitted to Tax Authorities platform
00010028	Business ED	Finalize	Failure while verifying pdf file uploaded
00010029	Business TA	Get	Tax Authorities business errors. Tax Authorities error codes are included in "errorMessage"
00010030	Technical TA	Get	Tax Authorities technical errors. Tax Authorities error codes are included in "errorMessage"
00010032	Technical TA	Get	Tax Authorities connection failed
00010033	Business ED	Get	Errors while processing invoice source data for UBL 2.1
00010034	Business ED	Get	Errors while processing invoice source data for UBL 2.1
00010037	Technical ED	All	Subscription is locked

00010039	Technical ED	Get	Print form could not be resolved. Only for transmissionType = 2.
00010040	Technical TA	Get	Transmission is currently suspended, due to technical issue on Tax Authorities platform
00010041	Business ED	Get	Document information related to delayed transmission is not valid
00010042	Business ED	GetFiles	Failure while getting files
00010043	Business ED	UploadFileRequest	Failure while requesting file SAS URI
00010050	Business ED	UploadFileRequest	File already exists
00010052	Technical ED	All	License failure by unauthorized user
00010053	Technical ED	Get	Issuer's Tax Identification Number validation failed
00010063	Business ED	RequestPayment	Failure while creating payment token
00010064	Business ED	Send/ SubmitPayment	No completed EFT-POS payments found
00010065	Business ED	Send/ SubmitPaymnet	EFT-POS payments invalid total paid amount
00010066	Business ED	Send/ SubmitPaymnet	Unexpected payments found
00010067	Business ED	Send/ SubmitPaymnet	Invalid payment request data
00010068	Business ED	CancelPayment	Failure while cancelling payment request
00150004	Business ED	Send/ RequestPayment/ Finalize	Not enough credits
00010077	Business ED	Send	Branch is locked
00160000	Business ED	ConnectDocuments	Document connection failed

## B2G Validation Error Messages

When the invoice publish type is set to B2G (2), a distinct validation process is initiated to ensure compliance with PEPPOL standards. Error messages, provided exclusively in Greek, are generated by KED.

Technical Message	User Message
ΑΠΟΡΡΙΨΗ ΕΙΔΟΣ ΠΡΟΫΠΟΛΟΓΙΣΜΟΥ (Project_Reference)	ΑΠΟΡΡΙΨΗ ΕΙΔΟΥΣ ΠΡΟΫΠΟΛΟΓΙΣΜΟΥ (PROJECT REFERENCE)
ΑΠΟΡΡΙΨΗ ΑΔΑΜ	ΑΠΟΡΡΙΨΗ ΑΔΑΜ
ΑΠΟΡΡΙΨΗ ΕΝΑΡΙΘΜΟΣ	ΑΠΟΡΡΙΨΗ ΕΝΑΡΙΘΜΟΣ
ΓΕΝΙΚΗ ΑΠΟΡΡΙΨΗ ΚΕΔ	ΓΕΝΙΚΗ ΑΠΟΡΡΙΨΗ ΚΕΔ
ΤΟ ΠΕΔΙΟ INVOICE.INVOICE_NUMBER ΕΙΝΑΙ NULL (BT-1)	ΔΕΝ ΑΝΑΦΕΡΕΤΑΙ ΑΡΙΘΜΟΣ ΤΙΜΟΛΟΓΙΟΥ
ΤΟ ΠΕΔΙΟ INVOICE.PROJECT_REFERENCE_ID ΕΙΝΑΙ NULL (BT-11)	ΔΕΝ ΑΝΑΦΕΡΕΤΑΙ ΣΤΟΙΧΕΙΟ ΑΝΑΦΟΡΑΣ ΑΓΑΘΟΥ/ΕΡΓΟΥ (ΤΥΠΟΣ ΠΡΟΫΠΟΛΟΓΙΣΜΟΥ)
ΤΟ ΠΕΔΙΟ INVOICE.CONTRACT_REFERENCE_ID ΕΙΝΑΙ NULL (BT-12)	ΔΕΝ ΑΝΑΦΕΡΕΤΑΙ ΣΤΟΙΧΕΙΟ ΑΝΑΦΟΡΑΣ ΣΥΜΒΑΣΗΣ
ΤΟ ΠΕΔΙΟ SELLER_TAX_SCHEME.TAX_REGISTRATION_ID ΕΙΝΑΙ NULL (BT-31)	ΔΕΝ ΑΝΑΦΕΡΕΤΑΙ ΑΝΑΓΝΩΡΙΣΤΙΚΟ ΦΠΑ ΠΩΛΗΤΗ
ΤΟ ΠΕΔΙΟ SELLER.ELECTRONIC_ADDRESS_ID ΕΙΝΑΙ NULL (BT-34)	ΔΕΝ ΑΝΑΦΕΡΕΤΑΙ ΗΛΕΚΤΡΟΝΙΚΗ ΔΙΕΥΘΥΝΣΗ ΠΩΛΗΤΗ
<b>ΤΟ ΠΕΔΙΟ BUYER.PARTY_ID ΕΙΝΑΙ NULL (BT-46)</b>	ΔΕΝ ΑΝΑΦΕΡΕΤΑΙ ΚΩΔΙΚΟΣ ΑΝΑΘΕΤΟΥΣΑΣ ΑΡΧΗΣ
<b>ΤΟ ΠΕΔΙΟ BUYER.TAX_REGISTRATION_ID ΕΙΝΑΙ NULL (BT-48)</b>	ΔΕΝ ΑΝΑΦΕΡΕΤΑΙ ΑΝΑΓΝΩΡΙΣΤΙΚΟ ΦΠΑ ΑΓΟΡΑΣΤΗ
<b>ΤΟ ΠΕΔΙΟ BUYER.ELECTRONIC_ADDRESS_ID ΕΙΝΑΙ NULL (BT-49)</b>	ΔΕΝ ΑΝΑΦΕΡΕΤΑΙ ΗΛΕΚΤΡΟΝΙΚΗ ΔΙΕΥΘΥΝΣΗ ΑΓΟΡΑΣΤΗ
<b>ΤΟ ΠΕΔΙΟ DELIVERY.DELIVER_TO_PARTY ΕΙΝΑΙ NULL (BT-70)</b>	ΔΕΝ ΑΝΑΦΕΡΕΤΑΙ ΟΝΟΜΑ ΠΑΡΑΛΑΜΒΑΝΟΝΤΟΣ ΜΕΡΟΥΣ
<b>ΤΟ ΠΕΔΙΟ DELIVERY.ADDRESS_LINE_1 ΕΙΝΑΙ NULL (BT-75)</b>	ΔΕΝ ΑΝΑΦΕΡΕΤΑΙ ΔΙΕΥΘΥΝΣΗ ΠΑΡΑΔΟΣΗΣ
<b>ΤΟ ΠΕΔΙΟ DELIVERY.LOCATION_CITY ΕΙΝΑΙ NULL (BT-77)</b>	ΔΕΝ ΑΝΑΦΕΡΕΤΑΙ ΠΟΛΗ ΠΑΡΑΔΟΣΗΣ

ΤΟ ΠΕΔΙΟ DELIVERY.LOCATION_POST_CODE ΕΙΝΑΙ NULL (BT-78)	ΔΕΝ ΑΝΑΦΕΡΕΤΑΙ ΤΑΧΥΔΡΟΜΙΚΟΣ ΚΩΔΙΚΑΣ ΠΑΡΑΔΟΣΗΣ
ΤΟ ΠΕΔΙΟ TAX_TOTAL.VAT_AMOUNT ΕΙΝΑΙ NULL (BT-110)	ΔΕΝ ΑΝΑΦΕΡΕΤΑΙ ΣΥΝΟΛΙΚΟ ΠΟΣΟ ΦΠΑ ΕΓΓΡΑΦΟΥ
ΤΟ ΠΕΔΙΟ ITEM_CLASSIFICATION.CLASSIFICATION_ID ΕΙΝΑΙ NULL (BT-158)	ΔΕΝ ΑΝΑΦΕΡΕΤΑΙ ΑΝΑΓΝΩΡΙΣΤΙΚΟ ΤΑΞΙΝΟΜΗΣΗΣ ΣΤΟΙΧΕΙΟΥ
ΤΟ ΠΕΔΙΟ INVOICE.INVOICE_NUMBER ΔΕΝ ΕΙΝΑΙ ΕΓΚΥΡΟ (BT-1)	Ο ΑΡΙΘΜΟΣ ΤΙΜΟΛΟΓΙΟΥ ΔΕΝ ΕΙΝΑΙ ΕΓΚΥΡΟΣ
ΤΟ ΠΕΔΙΟ BUYER.TAX_REGISTRATION_ID ΔΕΝ ΕΙΝΑΙ ΕΓΚΥΡΟ (BT-48)	Ο ΦΠΑ ΑΓΟΡΑΣΤΗ ΔΕΝ ΥΠΑΡΧΕΙ ΣΤΟ ΦΟΡΟΛΟΓΙΚΟ ΜΗΤΡΩΟ
ΤΟ ΠΕΔΙΟ INVOICE_ARG.SELLER_TAX_REPR_TAX_REG_ID ΔΕΝ ΕΙΝΑΙ ΕΓΚΥΡΟ (BT-63)	Ο ΦΠΑ ΦΟΡΟΛΟΓΙΚΟΥ ΑΝΤΙΠΡΟΣΩΠΟΥ ΔΕΝ ΥΠΑΡΧΕΙ ΣΤΟ ΦΟΡΟΛΟΓΙΚΟ ΜΗΤΡΩΟ
ΤΟ ΠΕΔΙΟ INVOICE_ARG.SELLER_TAX_SCHEME_TBL.TAX_REGISTRATION_ID ΔΕΝ ΕΙΝΑΙ ΕΓΚΥΡΟ (BT-31)	Ο ΦΠΑ ΠΩΛΗΤΗ ΔΕΝ ΥΠΑΡΧΕΙ ΣΤΟ ΦΟΡΟΛΟΓΙΚΟ ΜΗΤΡΩΟ
ΤΟ ΠΕΔΙΟ BUYER.TAX_REGISTRATION_ID ΔΕΝ ΥΦΙΣΤΑΤΑΙ (BT-48)	Ο ΦΠΑ ΑΓΟΡΑΣΤΗ ΔΕΝ ΥΠΑΡΧΕΙ ΣΤΗ ΛΙΣΤΑ ΑΝΑΘΕΤΟΥΣΩΝ ΑΡΧΩΝ
ΤΟ ΠΕΔΙΟ BUYER.PARTY_ID ΔΕΝ ΥΦΙΣΤΑΤΑΙ (BT-46)	Ο ΚΩΔΙΚΟΣ ΑΝΑΘΕΤΟΥΣΑΣ ΑΡΧΗΣ ΔΕΝ ΥΠΑΡΧΕΙ ΣΤΗ ΛΙΣΤΑ ΑΝΑΘΕΤΟΥΣΩΝ ΑΡΧΩΝ
ΤΟ ΠΕΔΙΟ INVOICE.CONTRACT_REFERENCE_ID ΔΕΝ ΥΦΙΣΤΑΤΑΙ (BT-12)	ΤΟ ΣΤΟΙΧΕΙΟ ΑΝΑΦΟΡΑΣ ΣΥΜΒΑΣΗΣ ΔΕΝ ΥΦΙΣΤΑΤΑΙ
ΤΟ ΠΕΔΙΟ MARK ΔΕΝ ΥΠΑΡΧΕΙ (BT-122)	ΤΟ ΠΕΔΙΟ MARK ΔΕΝ ΥΠΑΡΧΕΙ
ΤΟ ΠΕΔΙΟ AUTH CODE ΔΕΝ ΥΠΑΡΧΕΙ (BT-122)	ΤΟ ΠΕΔΙΟ AUTH CODE ΔΕΝ ΥΠΑΡΧΕΙ
ΤΟ ΠΕΔΙΟ MARK ΔΕΝ ΕΙΝΑΙ ΕΓΚΥΡΟ (BT-122)	ΤΟ ΠΕΔΙΟ MARK ΔΕΝ ΕΙΝΑΙ ΕΓΚΥΡΟ
ΤΟ ΠΕΔΙΟ AUTH CODE ΔΕΝ ΕΙΝΑΙ ΕΓΚΥΡΟ (BT-122)	ΤΟ ΠΕΔΙΟ AUTH CODE ΔΕΝ ΕΙΝΑΙ ΕΓΚΥΡΟ
ΤΟ UID ΔΕΝ ΕΙΝΑΙ ΕΓΚΥΡΟ (BT-122)	ΤΟ UID ΔΕΝ ΕΙΝΑΙ ΕΓΚΥΡΟ
ΔΕΝ ΒΡΕΘΗΚΕ ΑΝΤΙΣΤΟΙΧΟ ΧΡΕΩΣΤΙΚΟ (BILLING REF)	ΔΕΝ ΒΡΕΘΗΚΕ ΤΟ ΑΝΤΙΣΤΟΙΧΟ ΧΡΕΩΣΤΙΚΟ ΤΙΜΟΛΟΓΙΟ
ΔΕΝ ΥΠΑΡΧΕΙ ΠΛΗΡΟΦΟΡΙΑ ΣΥΣΧΕΤΙΣΗΣ ΜΕ ΤΟΝ ΠΡΟΫΠΟΛΟΓΙΣΜΟ (ΜΗ ΣΥΣΧ. ΠΙΣΤΩΤΙΚΑ Η BILLING REFERENCE)	ΔΕΝ ΥΠΑΡΧΕΙ ΠΛΗΡΟΦΟΡΙΑ ΣΥΣΧΕΤΙΣΗΣ ΜΕ ΤΟΝ ΠΡΟΫΠΟΛΟΓΙΣΜΟ (ΔΕΝ ΥΠΑΡΧΕΙ ΔΥΝΑΤΟΤΗΤΑ ΔΡΟΜΟΛΟΓΗΣΗΣ)
ΛΑΝΘΑΣΜΕΝΗ ΠΛΗΡΟΦΟΡΙΑ ΣΥΣΧΕΤΙΣΗΣ ΜΕ ΠΡΟΫΠΟΛΟΓΙΣΜΟ (PROJECT_REFERENCE_ID)	ΛΑΝΘΑΣΜΕΝΗ ΠΛΗΡΟΦΟΡΙΑ ΣΥΣΧΕΤΙΣΗΣ ΜΕ ΠΡΟΫΠΟΛΟΓΙΣΜΟ
ΑΦΜ ΑΓΟΡΑΣΤΗ ΚΑΙ ΚΩΔΙΚΟΣ ΑΝΑΘΕΤΟΥΣΑΣ ΜΗ ΣΥΜΒΑΤΑ (BUYER_PARTY_ID, TAX_REGISTRATION_ID)	ΑΦΜ ΑΓΟΡΑΣΤΗ ΚΑΙ ΚΩΔΙΚΟΣ ΑΝΑΘΕΤΟΥΣΑΣ ΜΗ ΣΥΜΒΑΤΑ

ΤΟ ID ΤΟΥ ΤΙΜΟΛΟΓΙΟΥ ΠΡΕΠΕΙ ΝΑ ΕΧΕΙ ΕΛΛΗΝΙΚΟ FORMAT (BT-1)	ΤΟ ID ΤΟΥ ΤΙΜΟΛΟΓΙΟΥ ΠΡΕΠΕΙ ΝΑ ΕΧΕΙ ΕΛΛΗΝΙΚΟ FORMAT
ΤΙΜΟΛΟΓΙΟ ΓΙΑ ΕΠΑΝΥΠΟΒΟΛΗ (SOFT REJECT)	ΤΙΜΟΛΟΓΙΟ ΓΙΑ ΕΠΑΝΥΠΟΒΟΛΗ (SOFT REJECT)
ΕΧΟΥΝ ΑΛΛΟΙΩΘΕΙ ΣΤΟΙΧΕΙΑ ΤΟΥ ΤΙΜΟΛΟΓΙΟΥ (INTEGRITY CHECK FAIL)	ΕΧΟΥΝ ΑΛΛΟΙΩΘΕΙ ΣΤΟΙΧΕΙΑ ΤΟΥ ΤΙΜΟΛΟΓΙΟΥ (INTEGRITY CHECK FAIL)
ΟΜΑΔΑ ΠΕΔΙΩΝ ΕΠΑΝΥΠΟΒΟΛΗΣ BG-24 ΔΕΝ ΥΠΑΡΧΕΙ	ΔΕΝ ΥΠΑΡΧΕΙ ΟΜΑΔΑ ΠΕΔΙΩΝ ΕΠΑΝΥΠΟΒΟΛΗΣ ΤΙΜΟΛΟΓΙΟΥ
ΟΜΑΔΑ ΠΕΔΙΩΝ ΕΠΑΝΥΠΟΒΟΛΗΣ BG-24 ΥΠΑΡΧΕΙ ΕΝΩ ΤΟ ΤΙΜΟΛΟΓΙΟ ΔΕΝ ΕΧΕΙ ΣΗΜΑΝΘΕΙ ΓΙΑ ΕΠΑΝΥΠΟΒΟΛΗ	ΥΠΑΡΧΕΙ ΟΜΑΔΑ ΠΕΔΙΩΝ ΕΠΑΝΥΠΟΒΟΛΗΣ ΕΝΩ ΤΟ ΤΙΜΟΛΟΓΙΟ ΔΕΝ ΕΧΕΙ ΣΗΜΑΝΘΕΙ ΓΙΑ ΕΠΑΝΥΠΟΒΟΛΗ

## EFT-POS Service Providers

Nsp Code	Nsp Provider
1	CARDLINK (TCP-Socket)
201	CARDLINK (Common WebECR)
2	EURONET (WebECR)
202	EURONET (Common TCP-Socket)
3	MELLON
4	NEXI (Common WebECR)
204	NEXI (Common TCP-Socket)
304	NEXI (WebECR)
5	EDPS
6	VIVA
7	ADYEN
8	ePay
10	Attica Bank (Common TCP-Socket)
210	Attica Bank (Common WebECR)
11	PANCRETA Bank (Common TCP-Socket)
211	PANCRETA Bank (Common WebECR)
12	JCC (Common TCP-Socket)
212	JCC (Common WebECR)
13	PBT (Common TCP-Socket)
213	PBT (Common WebECR)
214	MyPOS (Common WebECR)
15	EveryPay
16	Planet
98	Other (HEX) – Other Provider using HEX encoding on Provider’s Signature
99	Other (Base64) - Other Provider using Base64 encoding on Provider’s Signature

---

# Hospitality

## Cancel Connected

To cancel all open Order Tickets.

```
{
  "externalSystemId": "0dbed5c6-f6ba-4383-aeba-926adc52762f ",
  "transmissionType": 5,
  "identifier": "Parochos",
  "source": {
    "invoice": {
      "issuer": {
        "vatNumber": "000000000",
        "country": "GR"
      },
      "counterpart": {
        "vatNumber": "",
        "name": "Πελάτης Λιανικής",
        "country": "GR"
      },
      "invoiceHeader": {
        "CancelConnected": 1,
        "PointOfService": "T131",
        "series": "ΔΠ-0001",
        "aa": 10,
        "issueDate": "2025-03-14",
        "invoiceType": "8.6",
        "currency": "EUR"
      },
      "invoiceDetails": [
        {
          "entityName": "Επιστροφή"
        }
      ],
      "invoiceSummary": {
        "totalValue": 16.78
      },
      "correlatedInvoices": [
        {
          "mark": 400001948162049
        }
      ]
    }
  }
}
```

To transfer selected items to another table, start by issuing an order ticket for the items you wish to move, using the parameter recType: 7. Next, create an order ticket at the destination table for those transferred items.

---

## API Reference & Real-Time Documentation

Our [swagger-UI](#) automatically syncs with every API update, ensuring you always have access to the latest endpoints. For full context and implementation guides, we recommend cross-referencing Swagger with our main documentation. To switch between different service environments, use the **Definition** dropdown menu:

- **Parochos API v3:** Standard integration and core features.
- **Parochos Admin API:** Administrative and management tools.